

CHAMPION CARLOADS & PENS

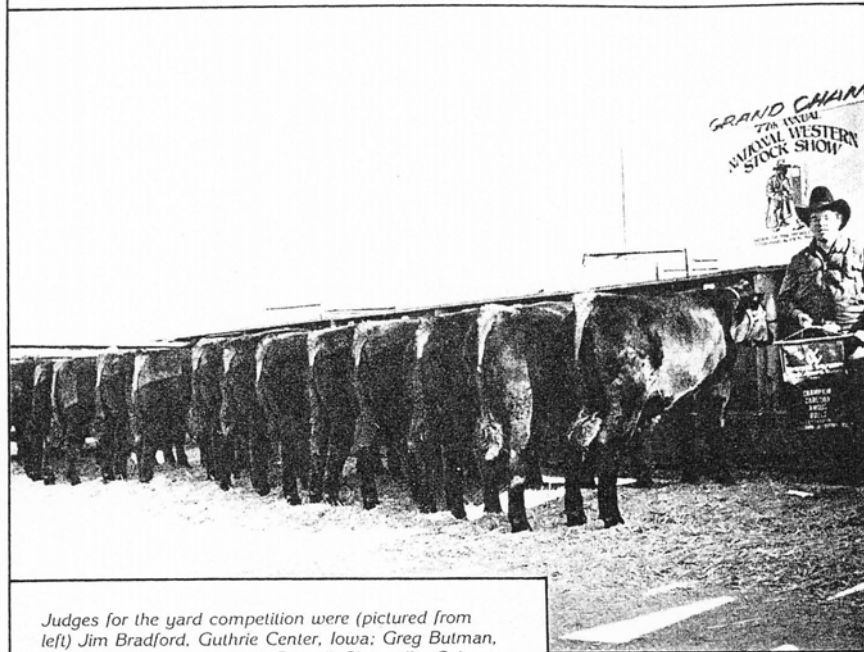
GRAND CHAMPION CARLOAD

Exhibited by Slagle Angus, Sargent, Neb.

For the second consecutive year Melvin, Jennie and Mark Slagle took home the coveted grand champion carload banner. Two such honors in just three years of competing is quite an accomplishment.

Fifteen stout, uniform sons of Loma Lanes Cracker Jack 12J and Cracker Jack Baros SA 860 earned the top vote from all three of the judges. The group posted an average age of 350 days and an average weight of 1,060 lb., for an average weight per day of age (WDA) of 3.02 lb.

The Slagles entered the registered Angus business some six years ago after more than a quarter of a century's experience in the commercial cattle industry.



Judges for the yard competition were (pictured from left) Jim Bradford, Guthrie Center, Iowa; Greg Butman, Pipestone, Minn.; and Keith Russell, Platteville, Colo.

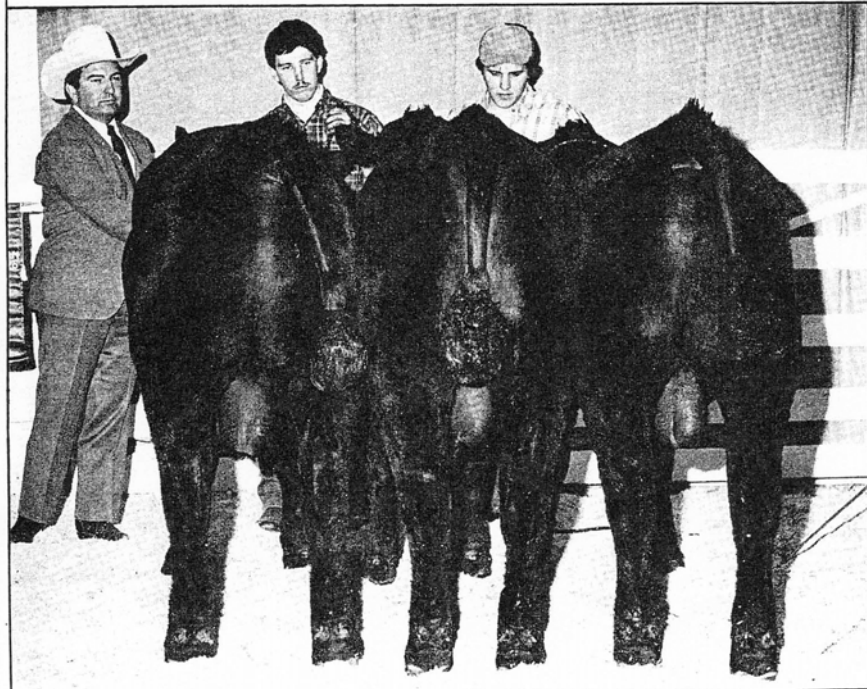


GRAND CHAMPION PEN OF THREE BULLS

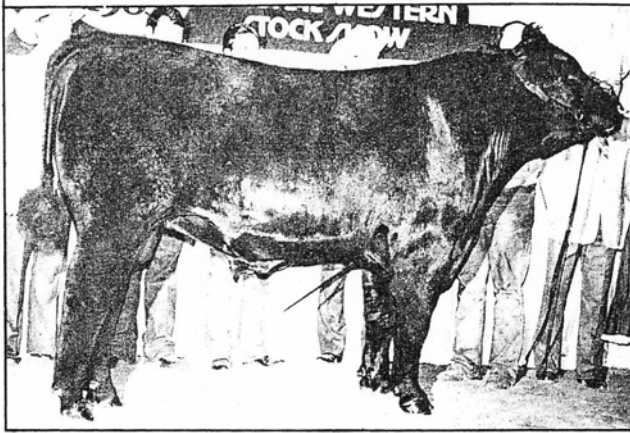
Exhibited by The Baldrige Place, North Platte, Neb.

It was all smiles in the Baldrige camp when the unanimous vote came through for champion pen. Certainly no newcomer to pen of three bulls competition in the yards (they claimed the reserve grand champion title last year with paternal brothers to this winning group), the Baldrige family lined up three strong young sons of Loma Lanes Cracker Jack 12J to take the grand champion banner.

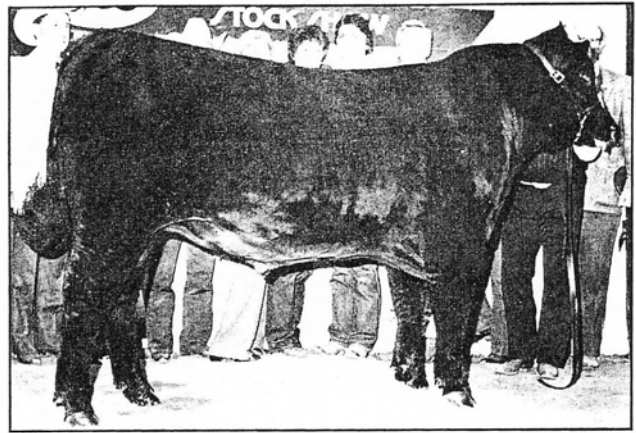
The early junior calves averaged 350 days and 1,058 lb. for an average WDA of 3.02 lb.



THE CHAMPION BULLS



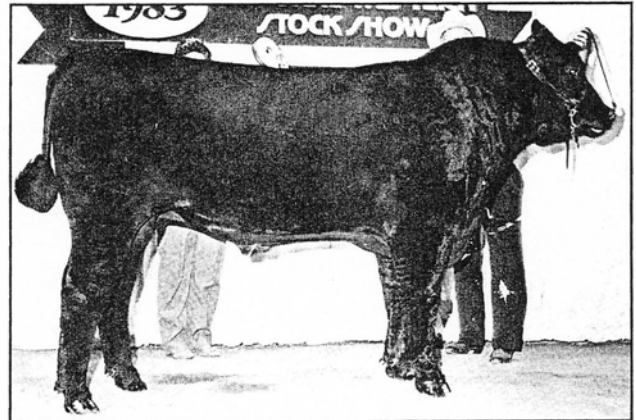
Junior champion bull ZAF Administrator 131, 4-22-81 1,858-lb. son of Sir Wms Warrant out of MSF Miss Black Revolution. Exhibited by Zehr Angus Farm, Flanagan, Ill., and Weaver Angus Farm, Peoria, Ill.



Reserve junior champion bull QLC Winchester, 3-6-81 1,798-lb. son of Fairfield Hi Guy out of QLC A8 Evergreen E H095L. Exhibited by K&K Cattle Co., Kearney, Neb.; Fairfield Farms, Lakeville, Conn.; and Harmon Angus Ranch, Lavina, Mont.



A few of the folks that paid careful attention to Hillman's decisions.



Reserve intermediate champion bull White Hall Walhallo 371, 5-3-81 1,706-lb. son of Sir Wms Warrant out of Hill Crest Blackbird 1936. Exhibited by White Hall Farms Inc., North Garden, Va.



BILL AVERY

(Pictured with the Association's
Dean Hurlbut)

HERDSMAN OF THE YEAR

Premier Angus Inc.
Cloverdale, Ind.

The coveted Herdsman of the Year title, awarded annually during Denver's National Western, was presented to Bill Avery, herdsman for Premier Angus Inc., Cloverdale, Ind. The highly sought after plaque has special significance for its recipients since the selection is made by fellow herdsmen.

Avery, an employee at Premier for the past five years, has also worked for Spring Creek Polled Herefords, Hopewell Jct., N.Y.; Laflin Angus, Olsburg, Kan.; and Gibbet Hill Angus, Groton, Mass. Prior to employment at those operations he received a B.S. degree in animal science at the University of Massachusetts. Also a farmer, Avery owns 40 acres near the Premier spread where he runs six registered Angus cows of his own plus some partnership Chianina cows.

Avery expressed his thanks and appreciation to Premier and to his fellow herdsmen for this award.

FEMALES

Class 1—calved 5-1-82 to 6-5-82 (10 shown): 1, R&J Ranch, Briggs, Texas, on R&J Miss Esso 1842, by Perryville Esso Extra 17M. 2, Garney Cattle Co., Afton, Okla., and W. Donald Jenkins Jr., Antioch, Tenn., on Garney Grand Pride, by General JJ Patton. 3, R&J on R&J Bo 1442, by Rosebank Connection 69. 4, Jolly Roger Angus, Belt, Mont., on Ronan Ellen Erica 101P, by Ronan Mac 30K. 5, Scott Bohlen, Howell, Mich., on Premier Tall Perfection DLB, by Ken Caryl Mr. Angus 8017.

Class 2—calved 4-6-82 to 4-26-82 (10 shown): 1, John Graham, Gilman, Iowa and Garney on Grahams Lucky Lady, by Fairfield Hi Guy. 2, LeRoy Erdmann, Wetonka, S.D., and Jim Baldrige, North Platte, Neb. on Wetonkas Erica 233 P, by Kazoo Jumbo 819. 3, Quirk Land & Cattle Co., Hastings, Neb., on QLC A51 Erica L790P, by Fairfield Hi Guy. 4, Domier Farms Inc., Sutton, Neb., and Premier Beef Cattle, Fowlerville, Mich., on Premier Hi Majesty of Verola, by Fairfield Hi Guy. 5, Sue Byergo, Barnard, Mo., on Byergos Miss Elia 189B, by Cracker Jack Baros SA 860.

Class 3—calved 3-24-82 to 4-4-82 (6 shown): 1, Huckfeldt-Krebs, Gordon, Neb., on Crystal Two HK, by High Voltage. 2, Dennis Knop, Ida Grove, Iowa, on KAF Miss Okie 277-978, by Harts Oak CH 0113. 3, Premier Beef on Premier Barbara 083A, by Premier Progressor. 4, Hayes Star Ranch, Travelers Rest, S.C., on Hayes Star Carolina Duchess, by Progression. 5, Mother Cow Associates, Red Lodge, Mont., on MCA Blackbird 3302, by Ken Caryl Solid Rock 0020.

Class Placing	Exhibitor	Average Age-(Days)	Average Weight	Average WDA
Pen of three bulls calved after 1-1-81 (9 shown)				
1.	TC Ranch, Franklin, Neb.—Dr Spock sons	284	863	3.03
2.	Windy Acres Angus, Harrison, Neb.—Sir Wms Warrant and Schearbrook Chaps sons	289	903	3.12
3.	The Baldrige Place, North Platte, Neb.—Loma Lanes Cracker Jack 12J sons	302	928	3.07
4.	Scotch Cap Angus Ranch, Bison, S.D.—Cracker Jack Baros SA 860 and PS Power Play sons	308	932	3.02
5.	Windy Acres Angus—Columbus Adventure 2057 sons	298	790	2.65
Pen of three bulls calved after 1-1-82 (6 shown)				
1.	The Baldrige Place—Loma Lanes Cracker Jack 12J sons	350	1,058	3.02
2.	Uptown Acres, Holstein, Iowa—Eileenmere Paradise 4480 sons	330	950	2.87
3.	Ken & Charlene Haas, Lusk, Wyo.—Thomas Elevation and Craft Lucky Strike sons	319	938	3.09
4.	Garney Angus, Afton, Okla.—Continental sons	332	942	2.83
5.	76 Ranch, Aladdin, Wyo.—Ken Caryl Mr. Angus 8017 and PS Power Play sons	339	983	2.90
Pen of three bulls calved between 9-1-81 and 12-31-81 (1 shown)				
1.	K-Plus Angus, Bassett, Neb.—Ankonian Nugget and Continental sons	495	1,143	2.30
Pen of three bulls calved 1-1-81 to 4-30-81 (1 shown)				
1.	TC Ranch—PS Power Play and Thomas Renegade sons	667	1,568	2.35
Champion Pen—Baldrige				
Reserve Champion Pen—TC				
Carload of 15 bulls calved after 1-1-82 (4 shown)				
1.	Slagle Angus, Sargent, Neb.—Loma Lane Cracker Jack 12J and Cracker Jack Baros SA 860 sons	350	1,060	3.02
2.	Summitcrest Farm, Summitville, Ohio—PS Power Play, Summitcrest New Enterprise, Ken Caryl Mr. Angus 8017, Sayre Patriot, Early Sunset Emulous 60E and Blackwitch Corbinaire 95 sons	319	891	2.79
3.	O'Neill Angus Farm, Logan, Iowa—Thomas Chaps, Spartan Grandeur O, O'Neills Explosion and Ken Caryl Mr. Angus 8017 sons	289	848	2.93
4.	K-Plus Angus Ranch—Ken Caryl Mr. Angus 8017, Continental and Windfall M sons	308	861	2.79
Carload of 15 bulls calved between 9-1-81 and 12-31-81 (1 shown)				
1.	77 Ranch, Wichita Falls, Texas—Premier Big Time, Sayre Patriot, Esquire Northern Marshall 97, Happyvale Spark 144L and Edictor 28 of 77 sons	442	1,018	2.30
Carload of 12 bulls calved between 9-1-80 and 8-31-81 (2 shown)				
1.	Ankony Shadow Isle Ranch, Minatare, Neb.—Ankonian Cornerstone, Ankonian Commander, Ankonian Dynamo and Ankonian Sentry sons	682	1,578	2.31
2.	Wagon Wheel Ranch, Yuma, Colo.—Schearbrook Fortune, Paintrock John Henry 29 and Revolution EB sons	660	1,352	2.04
Champion Carload—Slagle				
Reserve Champion Carload—Summitcrest				

The yards. For many, it is the competition here that truly captures Denver's unique flavor. Pen and carload competition, deep in tradition, set the National Western apart from any other livestock event.

This year the Angus showed inside, and the arena was packed. Seventeen pens and seven carloads vied for the prestigious championships—youngsters captured both top titles.

Jim Bradford, Guthrie Center, Iowa; Greg Butman, Pipestone, Minn.; and Keith Russell, Platteville, Colo., analyzed the 156 bulls on Thursday afternoon.

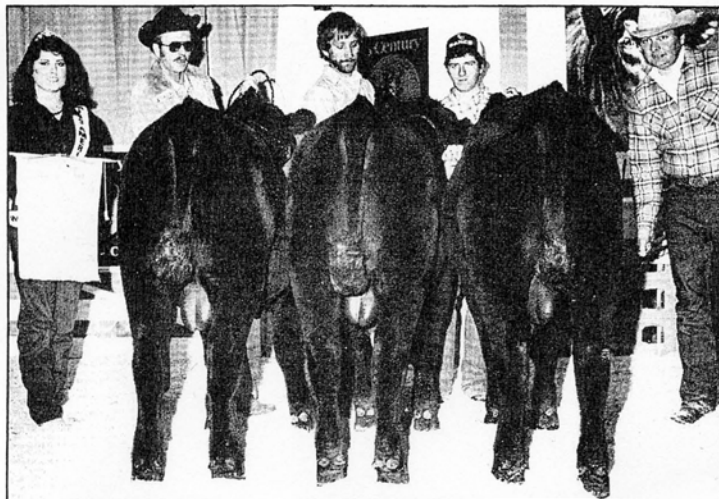


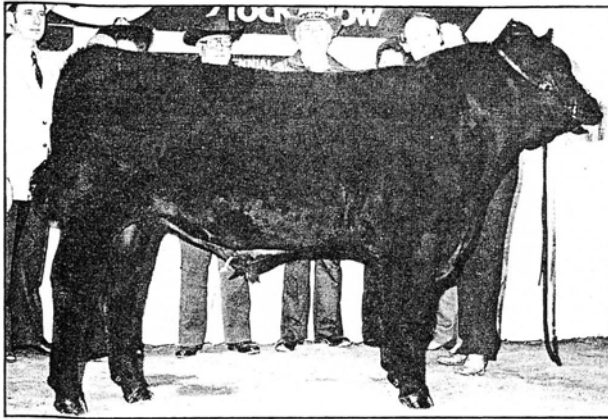
RESERVE GRAND CHAMPION CARLOAD

*Summitcrest Farm, Summitville, Ohio
Son of PS Power Play, Summitcrest New Enterprise, Ken Caryl Mr. Angus 8017, Sayre Patriot, Early Sunset Emulous 60E and Black Witch Corbinaire 95 made up the reserve grand champion carload exhibited by Summitcrest. The group of fifteen junior bull calves stood second in class to the champion pen, then moved up to claim the reserve banner. With an average of 319 days and 891 lb., their average WDA was 2.79 lb.*

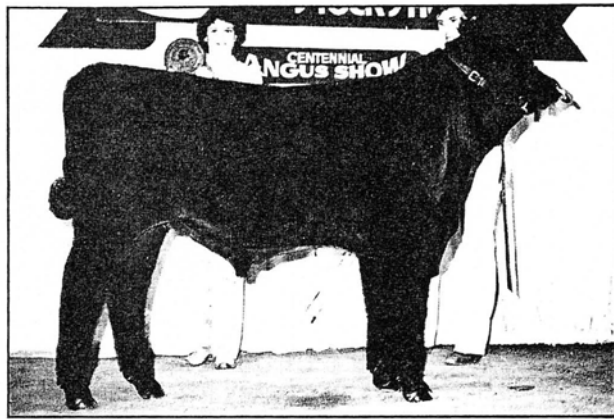
RESERVE GRAND CHAMPION PEN OF THREE BULLS

*TC Ranch, Franklin, Neb.
Perennial competitors in the yards, Vance and Connie Uden of TC Ranch captured the reserve grand champion pen title with a group of three Dr Spock calves. The youngest pen of 17 entries, the bulls averaged 284 days and 863 lb. for a 3.03 lb. WDA average. TC Ranch has entered strong contenders in the carload competition for the past several years—last year their group of 12 earned the reserve grand championship.*

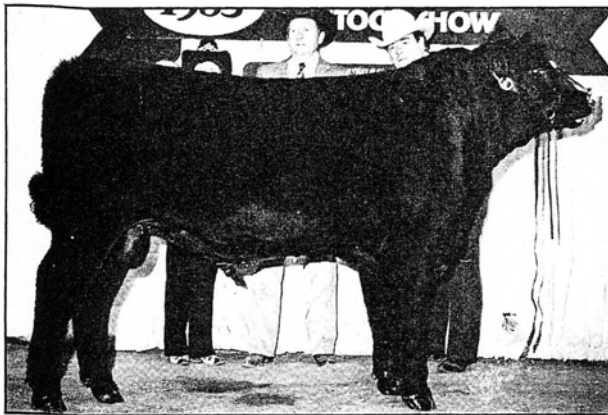




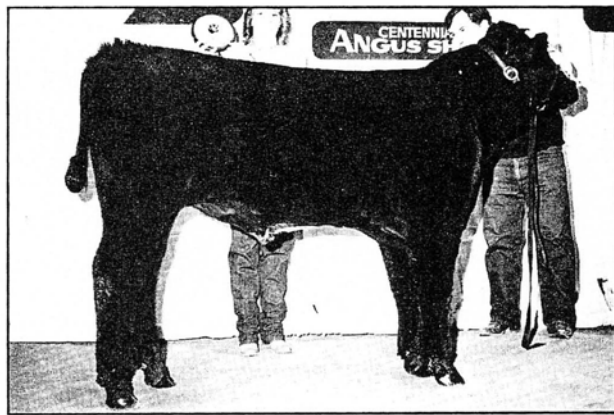
Senior bull calf champion R&J Transformer 2371, 9-1-81 1,429-lb. son of R&J Ike out of Lucy of BE 218H. Exhibited by Snider Brothers Angus Farms, Gerald, Mo., and Dozier Angus Farm, Bland, Mo.



Junior bull calf champion Crackerjack Brutus 512, 3-11-82, 1,004-lb. son of Loma Lanes Cracker Jack Baros 12J out of Blackbird Freda 942. Exhibited by LeRoy Erdmann, Wetonka, S.D.; S/2 Angus, Point Reyes, Calif.; Leo's Angus, Garden City, Mo.; and Jim Baldrige, North Platte, Neb.



Reserve senior bull calf champion Enforcer, 11-4-81 1,397-lb. son of PS Power Play out of Bomford Emulous Erica 19. Exhibited by Bomford Farms, Miami, Okla., and Garney Cattle Co., Afton, Okla.



Reserve junior bull calf champion Greenbrae Chairman, 5-10-82 842-lb. son of Fairfield Hi Guy out of Greenbrae Blackbird Lass. Exhibited by Leland & Christopher Bell, Rocklin, Calif.; Dunbar Angus, Oakland, Calif.; Dunipace Angus, Auburn, Calif.; Premier Angus Inc., Cloverdale, Ind.; B&L Ranch, Allen, Okla.; and Silveira Bros., Mendota, Calif.

Class 4—calved 3-10-82 to 3-20-82 (11 shown): 1, R&J on R&J Lady Dianne 712, by Perryville Esso Extra 17M. 2, R&J on R&J Christine 702, by Perryville Esso Extra 17M. 3, Mark Todd, Ryegate, Mont., on Green Mt Sirs Lassie 2088, by Sir Wms Warrant. 4, Randel E. Nelson, Ansley, Neb., on Madge of TM, by Ken Caryl Mr. Angus 8017. 5, Roger & Kay Bowers, St. Ignatius, Mont., on Kadence Blackcap Daisy 226, by Kadence Crusader.

Class 5—calved 3-3-82 to 3-8-82 (9 shown): 1, Claude Robinson Jr., Wellsville, Mo., on OBC Miss Lass 312, by Fairfield Hi Guy. 2, Huckfeldt-Krebs, Bear Creek Angus, Cameron, Mont., and S/2 Angus, Pt. Reyes Station, Calif., on Coco HK, by High Voltage. 3, Janna Nelson, Salmon, Idaho, on Nelson Elba Lassie 2197, by Nelson Update. 4, Silver Plume Ranch, Colorado Springs, Colo.: Timber Valley Farms, Dawn, Mo.; and UT Farms, Tuttle, Okla., on Silver Plume Miss Tiffany, by Silver Plume Lil Abner. 5, Laurie Ann Todd, Stockton, Mo., on Omar Warrants Pride 590, by Sir Wms Warrant.

Class 6—calved 2-23-82 to 3-2-82 (9 shown): 1, Kevin Reeser, LeRoy, Ill., on KAR Playgirl, by PS Power Play. 2, Hayes Star on Hayes Star Tall Rosanna, by Progression. 3, Premier Beef on Premier Celebrity, by Ken Caryl Mr. Angus 8017. 4, Gerald Kirwan, Bassett, Neb., on K Plus Black Miss 2088, by Ken Caryl Mr. Angus 8017. 5, Carpenter Angus Ranch, Jacksboro, Texas, on CAR Lucy 207C, by Progression.

Class 7—calved 1-30-82 to 2-17-82 (12 shown): 1, Erdmann Angus Ranch, Wetonka, S.D., and Jim Baldrige, on Queen May 9P, by Kazoo Jumbo 819.

2, Erdmann Angus and Jim Baldrige on Queen Idelette 6P, by Kazoo Jumbo 819. 3, Lovana Farms, Clarkesville, Ga., on Lovana Colossal C515, by Sir Wms Warrant. 4, Quirk on QLC A45 Jestress A226P, by Nelson Express. 5, Darrell & Mike Sundsbak, Des Lacs, N.D., on 7S Miss Dakota Yankee 211, by 7S Warrant 021.

Class 8—calved 1-1-82 to 1-26-82 (11 shown): 1, LeRoy Erdmann and Jim Baldrige on Queen Idelette 3P, by Kazoo Jumbo 819. 2, S/2 on S/2 Cass 49er, by Ken Caryl Ironsides 0489. 3, R&J and Canfield Farms, Union, Mo., on R&J Dawn 102, by Ken Caryl Mr. Angus 8017. 4, Eric LaFranchi, Calistoga, Calif., on Oak Ridge Queen Lassie 03G, by Skarship Educator. 5, Knop Angus Farm, Ida Grove, Iowa, on KAF Miss Autumn Ann, by Sir Wms Warrant.

Class 9—calved 10-4-81 to 12-11-82 (6 shown): 1, Lovana and B&L Ranch, Allen, Okla., on Lovana Keepsake B421, by Sir Wms Warrant. 2, Erik Griswold, Collinsville, Okla., on Elvira of Meadowbrook 284, by PS Power Play. 3, Linda Kroeker, Hutchinson, Kan., on Black Gold Aloha Lassie, by Sir Wms Elector. 4, Burthlene Farms, Mount Hope, Ont., on Miss Smersh of Burthlene 58N, by Sir Wms Warrant. 5, Bear Creek and Huckfeldt-Krebs on First Lady 1121, by High Voltage.

Class 10—calved 9-1-81 to 9-27-81 (8 shown): 1, Larry Morrison, Sultan, Wash., and Premier Beef on Premier 7X Heiresse, by Sir Wms Warrant. 2, Lovana on Burthlene Miss Lovana, by Sir Wms Warrant. 3, Brett Erickson, Ft. Lupton, Colo., on AVA Lady Ann E631, by Sir Wms Warrant. 4, Premier Angus Inc., Cloverdale, Ind., on Premier Empress 3284W,

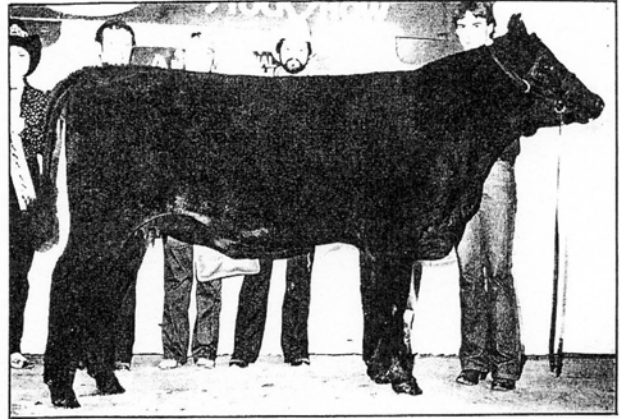


Julie Schuler, Kansas Angus Queen, was one of several queens on hand to present class winners with special centennial plaques. Eldon Krebs accepted such an award for Crystal Two HK in class 3.

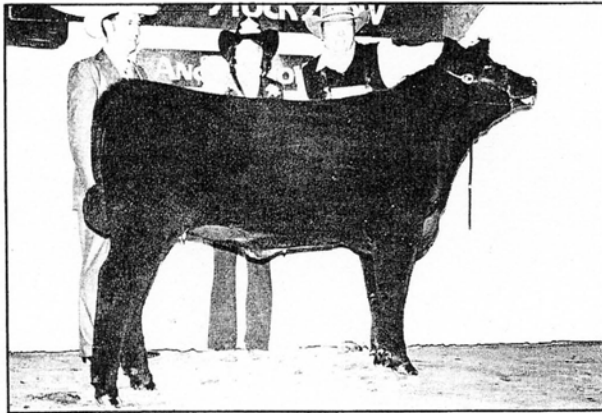
THE CHAMPION FEMALES



Reserve junior champion heifer Baldrige Queen 761, 4-24-81 daughter of JB Beau Jangles out of FV Queen 399. Exhibited by Judson Baldrige, North Platte, Neb.



Intermediate champion heifer Double Dye Lady Diana KG, 6-3-81 daughter of Sir Wms Warrant out of Lady Emulation 75. Exhibited by Kent Dye, Shelbina, Mo., and Weaver Angus Farm, Peoria, Ill.



Reserve senior heifer calf champion Lovana Keepsake B421, 11-15-81 daughter of Sir Wms Warrant out of Chardon Keepsake 64L. Exhibited by Lovana Farms, Clarksville, Ga., and B&L Ranch, Allen, Okla.



Reserve intermediate champion CW Duchess Pride 81-2, 5-1-81 daughter of Sir Wms Warrant out of Pride Duchess HDS8. Exhibited by Jolly Roger Angus Ranch, Belt, Mont.



Bill Avery of Premier Angus received the Herdsman of the Year award. He fitted Pine Drive Big Sky for an illustrious show career this past year.

by LEMAR Eileenmere Lad 549. 5, Huckfeldt-Krebs on Erianne HK 8191, by Sir Wms Maverick 6568.

Class 11—calved 7-1-81 to 8-3-81 (8 shown): 1, Creek View Angus Ranch, Snelling, Calif., and Katherine Bollman, Pulaski, Iowa, on Warrants Wind-song, by Sir Wms Warrant. 2, Leroy Billman, Ostrander, Ohio, and Premier Angus on Pine Drive Hi Lite, by LEMAR Eileenmere Lad 549. 3, Bur Cole Ranch, Grovetown, Ga., and Hayes Star on Hayes Star Blue Lady E41, by Premier Progressor. 4, Mary Wagner, Harlan, Kan., on Susanna 2 of MCW, by PS Power Play. 5, Burthlene Farms on Miss Starlet of Burthlene 42N, by Sayre Patriot.

Class 12—calved 5-1-81 to 6-3-81 (12 shown): 1, G. Kent Dye II, Shelbina, Mo., and Weaver Angus Farm, Peoria, Ill., on Double Dye Lady Diana KG, by Sir Wms Warrant. 2, Jolly Roger on CW Duchess Pride 81-2, by Sir Wms Warrant. 3, John Wagner, Harlan, Kan., on Bandomere 2 JHW, by Sir Wms Warrant. 4, Lovana on Early Sunset Allegra 93N, by Sir Wms Warrant. 5, Prospect Farms Ltd., Arva, Ont., on Prospect Miss Morrison 63N, by PS Power Play.

Class 13—calved 4-1-81 to 4-29-81 (13 shown): 1, Windy Acres, Picket Fence, Abacus, Bertel Skou, and Lovana on Windac Class 1752, by Columbus Adventure 2057. 2, Judson Baldrige, North Platte, Neb., on Baldrige Queen 761, by JB Beau Jangles. 3, Premier Beef and Estancias La Primavera, Buenos Aires, Argentina, on Premier Evinces 050X, by PS Power Play. 4, Prospect Farms on Prospect Miss Morrison 60N, by PS Power Play. 5, Skarship Farm, Hillsdale, N.Y., on Skarship Elegant Elba, by Sir Wms Geiger.

Class 14—calved 3-1-81 to 3-18-81 (11 shown): 1, Moltzahn Angus Farms, Bashaw, Alta., and Jolly

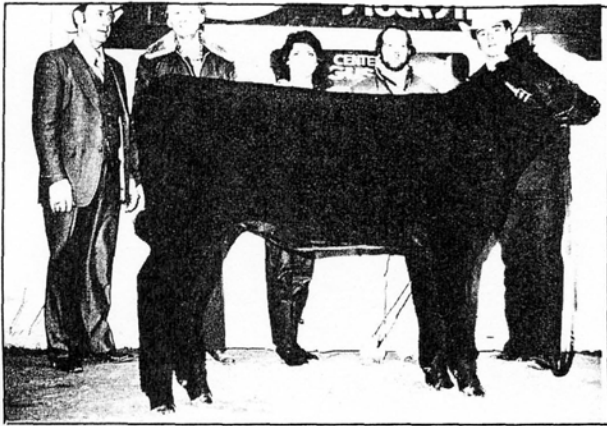
Roger on MG's Black Diamond, by Sir Wms Wampum. 2, H&H Angus Ranch, Keldron, S.D., on H&H Elma 8321, by Thomas Double Take. 3, Gunston West, Lampasas, Texas, and Frank & Cey Dieter, Redondo, Calif., on HA Miss Bartman, by Briarhill Bartman. 4, R&J on R&J Blossom 1361, by General JJ Patton. 5, Ronalee Parker, Belt, Mont., on JRS Mulben Pattie 174N, by Sir Wms Warrant.

Class 15—calved 2-8-81 to 2-26-81 (7 shown): 1, Black Gold Farms, Forest River, N.D., on Prairie Pride Lucky Charm, by Craft Lucky Strike. 2, Premier Beef and Gerald Lewis, Whitehall, Mont., on Powerline Klassy Lass, by Powerline Agresso. 3, Leachman Angus Ranch, Bozeman, Mont., on Leachman Lass 1004, by PJM Powerpoint. 4, Gunston West and Johnson & Empire, Edgerton, Mo., on Gunston Senorita, by General JJ Patton. 5, R&J on R&J Eborea 281, by General JJ Patton.

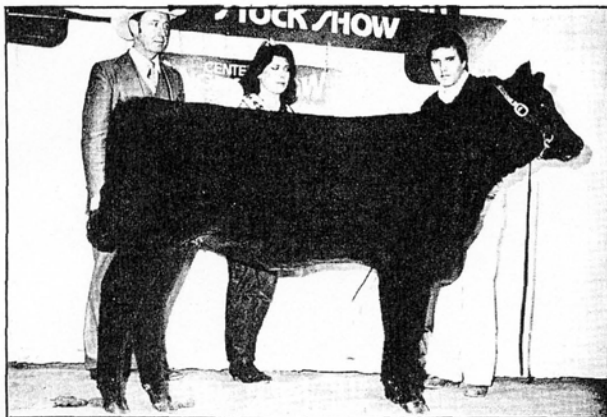
Class 16—calved 1-3-81 to 1-26-81 (6 shown): 1, Sundsbak on 7S Miss Warrant 18, by Sir Wms Warrant. 2, Lisa Hawkins, Mason, Mich., and Lovana on Elaine H 108, by Sir Wms Warrant. 3, Clay Rusk, Sun City, Kan., on RR Miss Angus L341, by Ken Caryl Mr. Angus 8017. 4, Dee Bar H, Decatur, Texas, on Crystals Image, by General JJ Patton. 5, John Callan, Stonington, Ill., and Garney on Callans Patriot Eisa 4831, by Sayre Patriot.

BULLS

Class 17—calved 5-8-82 to 6-4-82 (5 shown): 1, Leland & Christopher Bell, Rocklin, Calif.; Dunbar Angus, Oakland, Calif.; Dunipace Angus, Auburn, Calif.; Silveira Bros., Mendota, Calif.; B&L; and Premier Angus on Greenbrae Chairman, by Fairfield



Junior heifer calf champion Grahams Lucky Lady, 4-11-82 daughter of Fairfield Hi Guy out of GA Miss Emulation 198. Exhibited by John Graham, Gilman, Iowa, and Garney Cattle Co., Afton, Okla.



Reserve junior heifer calf champion Wetonkas Erica 233P, 4-10-82 daughter of Kazoo Jumbo 819 out of Wetonkas Erica 1759. Exhibited by LeRoy Erdmann, Wetonka, S.D., and Jim Baldrige, North Platte, Neb.



Hi Guy, 2, James O'Neill, Logan, Iowa, and William B. Wilson, Midland, Texas, on Oneills Camelot, by Thomas Chaps, 3, Stevenson Angus Ranch, Hobson, Mont., on Rebel 165P JRS, by AAR Maverick 2240, 4, Sunnyvail Angus, McCoy, Colo., on Sunnyvail Crowd Pleaser, by Sir Wms Warrant, 5, Drew & Jack Kragel, Coulter, Iowa, on DKS Mr. Ace 022, by Sir Wms Warrant.

Class 18—calved 4-26-82 to 5-4-82 (9 shown): 1, Eric LaFranchi on Oak Ridge Sibelius, by Skarship Educator, 2, Kevin Swaim & Family, Marshall, Ind., and Jim Sipe, Carmel, Ind., on Shadymere Designer 3JS, by General JJ Patton, 3, Clifford Simmons and Omega Cattle Corp., Williamston, Mich., on Omegan Royal, by Ken Caryl Mr. Angus 8017, 4, Kilgore Angus Farm, Rising City, Neb.; Leo's Angus, Garden City, Mo.; and ZR Angus, Marlow, Okla., on Direct Current, by High Voltage, 5, Ankony Shadow Isle Ranch, Minatare, Neb., on Ankonian Boomer, by Ankonian Atomic.

Class 19—calved 4-1-82 to 4-11-82 (11 shown): 1, Mr. & Mrs. W.B. Henley, Paso Robles, Calif., and Weaver on Creston Mr. Universe, by Ken Caryl Mr. Angus 8017, 2, Carl Murphy, Morral, Ohio, and Weaver on Genesis, by Ken Caryl Mr. Angus 8017, 3, Randel Nelson, Ansley, Neb., and Huckfeldt-Krebs on Banker HK 7462, by High Voltage, 4, Michigan State University, East Lansing, Mich., on MSU Legislator, by MSU Legacy, 5, Sydenstricker Angus Farms, Mexico, Mo.; CJ Angus, Mapleton, Iowa, and LeRoy Erdmann on TH Daddy Warbucks, by Enforcer HK 1170.

Class 20—calved 3-6-82 to 3-22-82 (9 shown): 1, LeRoy Erdmann, S/2, Leo's and Jim Baldrige on Crackerjack Brutus 512, by Loma Lanes Cracker

Jack 12J, 2, Robinson, Jim Baldrige and Royale Farms, Brooten, Minn., on OBC Hi Guy 272, by Fairfield Hi Guy, 3, Douglas Stevenson, Moccasin, Mont., and Jolly Roger on Basin Fury, by Shoshone Banigan LE6, 4, Jolly Roger, Stevenson Angus and Basin Angus Ranch, Moccasin, Mont., on Kenalta Merit, by Ken Caryl Mr. Angus 8017, 5, George Swenka & Family, Oxford, Iowa, and Summitcrest Farms, Summitville, Ohio, on Double G Calculator, by Skarship Educator.

Class 21—calved 2-12-82 to 3-4-82 (10 shown): 1, William and Barbara Rishel, North Platte, Neb., on OBC Simon 192, by Fairfield Hi Guy, 2, Ken & Charlene Haas, Lusk, Wyo., on KCH Concord 5140, by Thomas Elevation, 3, Blugrass Angus Farm, Danville, Ky., on Blugrass Impression, by Ken Caryl Mr. Angus 8017, 4, Robinson on OBC Copenhagen, by Fairfield Hi Guy, 5, Ken-Caryl Cattle Co., Red Lodge, Mont., and Edward Serrell Jr., Larkspur, Colo., on Ken Caryl Luther 2032, by Sir Wms Warrant.

Class 22—calved 1-1-82 to 2-11-82 (13 shown): 1, Gunston West on Gunston Alamo, by Progression, 2, Powerline Farms Inc., Whitehall, Mont., Sitz Angus, Harrison, Mont., and Jolly Roger on Powerline Sensation, 3, Boot Strap and Eillanvannin Farms, Gormley, Ont., on Boot Strap Source, by Ken Caryl Mr. Angus 8017, 4, Rishel on B/R Reflection, by High Voltage, 5, Bur Cole and Hayes Star on Perfection, by Progression.

Class 23—calved 10-20-81 to 12-10-81 (5 shown): 1, Bomford Farms, Miami, Okla., and Garney on Enforcer, by PS Power Play, 2, George Graham, Wichita Falls, Texas, and Roland Burrows, Schulenburg, Texas, on Black Gold Gabriel, by Sir Wms Elector, 3, Paul Gerald Pickrell, Augusta, Ky., and Lovana



Bill Bedingfield, American Angus Assn. vice president, traveled from Yale, Okla., to take in the show.