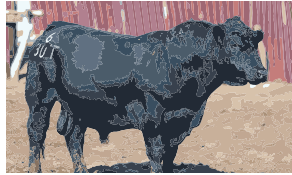


PERFORMANCE REPORT



Compiled by Linda Evans, assistant editor

This column features the performance leaders in central bull tests hosted across the country. To access a state-by-state listing of central bull tests, visit our Virtual Library online at www.api-virtuallibrary.com/CentralBullTests.htm. The listing includes contact information, links to test websites, current test schedules and dates of upcoming tests.

2018 Clemson Bull Test

112-day report (Dec. 12, 2017)

Fifty-nine bulls were delivered to the 2018 Clemson Bull Test at the Clemson Beef Cattle Farm near Pendleton, S.C., Aug. 9. There are 19 senior Angus bulls and 13 junior Angus bulls on test. The bulls were weighed on test Aug. 24 following a 14-day warm-up period.

HIGH-ADG SENIOR ANGUS Lot 43; owner: Leonard Fussell, Millers Creek, N.C.; sire: KCF Bennett Fortress; ADG: 4.82 lb.; ADG ratio: 124; WDA: 3.61 lb.; WDA ratio: 111; wt.: 1,685 lb.

HIGH-WDA SENIOR ANGUS Lot 53; owner: Oak Hill Farm, Six Mile, S.C.; sire: RB Tour of Duty 177; ADG: 4.18 lb.; ADG ratio: 107; WDA: 3.75 lb.; WDA ratio: 116; wt.: 1,630 lb.

HIGH-ADG JUNIOR ANGUS (TIE) Lot 8; owner: Paul Boyd Angus Farm, Clover, S.C.; sire: Plattermere Weighup; ADG: 4.39 lb.; ADG ratio: 119; WDA: 3.44 lb.; WDA ratio: 105; wt.: 1,290 lb.

HIGH-ADG (TIE) AND HIGH-WDA (TIE) JUNIOR ANGUS Lot 77; owner: Currahee Cattle Co., Ken Whitfield, Toccoa, Ga.; sire: Rito 303 of 9Q15 Prog; ADG: 4.38 lb.; ADG ratio: 119; WDA: 3.57 lb.; WDA ratio: 109; wt.: 1,405 lb.

HIGH-WDA JUNIOR ANGUS (TIE) Lot 66; owner: Broadway Cattle Farm, Monroe, N.C.; sire: Connealy 9933 2339; ADG: 3.96 lb.; ADG ratio: 108; WDA:

3.58 lb.; WDA ratio: 109; wt.: 1,430 lb.

SENIOR ANGUS AVERAGES (19 HEAD) ADG: 3.89 lb.; WDA: 3.24 lb.; wt.: 1,418 lb.

JUNIOR ANGUS AVERAGES (13 HEAD) ADG: 3.68 lb.; WDA: 3.27 lb.; wt.: 1,249 lb.

The sale is scheduled for Feb. 3, 2018.

For additional information contact Steven Meadows, bull test program director, at smdws@clemson.edu or at 864-633-9970 (cell) or Gary Burns, Clemson Bull Test manager at gburns@clemson.edu or at 864-617-3402 (cell). Information is also available on the test website at www.clemson.edu/extension/livestock/beef/bulltests-cubt/.

IBEP Winter Test

28-day report (Nov. 21, 2017)

A total of 173 bulls and 17 get-of-sire groups were delivered to the Feldun-Perdue Ag Center near Bedford, Ind., for the 2017 Indiana Beef Evaluation Program (IBEP) Winter Test. Angus, Hereford, Red Angus, SimAngus, Simmental, Maine-Anjou, Lim-Flex and Charolais are represented in the test.

Interim weigh dates were scheduled for Jan. 23 and Feb. 20, 2018. The bulls will be weighed off test March 26.

HIGH-ADG AND HIGH-INDEXING ANGUS Lot 65;

owner: Stewart Select Angus, Greensburg, Ind.; sire: MAF Tanker 23; ADG: 6.25 lb.; ADG ratio: 155; WDA: 3.63 lb.; WDA ratio: 114; wt.: 1,210 lb.; test index: 139

HIGH-WDA ANGUS Lot 29; owner: von Leer Farm, Mitchell, Ind.; sire: MW 964 Hoover Dam 11; ADG: 4.82 lb.; ADG ratio: 120; WDA: 4.04 lb.; WDA ratio: 126; wt.: 1,150 lb.; test index: 122

Bulls will sell April 20, 2018, in the 76th IBEP Bull Sale and Springville Feeder Auction Association Bred Heifer Sale.

For more information contact Terry Stewart at tstewart@purdue.edu or 765-494-0138; fax: 765-494-9346; Brad Shelton, test station manager, at 812-279-8554 or sheltonb@purdue.edu; or Donna Lofgren, performance records and website, at dlofgren@purdue.edu. Information is available on the website at www.ansc.purdue.edu/ibep.

Nebraska Bull Test

60-day report (Dec. 12, 2017)

The Nebraska Bull Test, conducted at Rohde Farms, Mason City, Neb., reported that consignors delivered 125 Angus bulls, including 51 calving-ease bulls, that were weighed on test Oct. 13-14 for the start of the 2017-2018 test.

HIGH-ADG CALVING-EASE ANGUS Lot 71CE;

Calhoun Bull Evaluation Performance Test & Sale, Dec. 1, 2017, Calhoun, Ga.



Alan Bridges and Phillip Bridges, Bridges Angus Farm LLC, Lexington, Ga., consigned the high-indexing Angus bull. Bridges Weigh Up 6102 is a September 2016 son of Plattermere Weigh Up K360. He posted an average daily gain of 4.98 lb., with an adjusted yearling weight of 1,408 lb. Pictured are (from left) Alan Bridges and Phillip Bridges, consignors; and Lee Brown, Georgia Cattlemen's Ass'n president.

owner: Reiter Angus, Chris and Amber Reiter, Miller; sire: Western Cut; ADG: 6.28 lb.; ADG ratio: 143; WDA: 3.74 lb.; WDA ratio: 110; wt.: 1,254 lb.

HIGH-WDA CALVING-EASE ANGUS Lot 46CE; owner: Pope Farms, Jeff Pope, Ravenna; sire: Connealy Final Solution; ADG: 5.29 lb.; ADG ratio: 120; WDA: 3.92 lb.; WDA ratio: 115; wt.: 1,066 lb.

HIGH-ADG AND HIGH-WDA ANGUS Lot 89; owner: Double D Angus, Linwood; sire: O'Neill's Black Bardolier; ADG: 6.88 lb.; ADG ratio: 146; WDA: 4.28 lb.; WDA ratio: 118; wt.: 1,394 lb.

ANGUS CALVING-EASE AVERAGES (51 HEAD) ADG: 4.41 lb.; WDA: 3.41 lb.; wt.: 1,061 lb.

ANGUS AVERAGES (74 HEAD) ADG: 4.73 lb.; WDA: 3.63 lb.; wt.: 1,145 lb.

The next interim weight was to be taken Jan. 11, 2018, with final weights scheduled for Feb. 9-10. The test sale will be March 28 at Broken Bow Livestock, Broken Bow, Neb.

For more information contact Mick Phillips, test manager, at 308-764-2378 or on sale day 308-764-7255 or Shane Rohde at 308-212-0157; or visit the test website at www.nebraskabulltest.com.

UBIA Bull Test

Mid-test report (Dec. 12, 2017)

The Utah Beef Improvement Association (UBIA) received junior and senior bulls Oct. 2 at Kenison Farm and Feedlot, Levan. Bulls

entered in the senior test must have been born Sept. 1-Dec. 31, 2016. Bulls entered in the junior test must have been born Jan. 1-March 15, 2017.

There are 159 junior Angus bulls and 10 senior Angus bulls on test. Interim weights were scheduled for Jan. 9, with bulls weighed off test Feb. 6.

HIGH-ADG AND HIGH-INDEXING JUNIOR ANGUS Lot 93; owner: Larsen Angus, Holden; sire: Sitz Investment 660Z; ADG: 5.71 lb.; ADG ratio: 174; WDA: 3.57 lb.; wt.: 1,205 lb.; sale ratio: 163

HIGH-WDA JUNIOR ANGUS Lot 99; owner: Lisonbee Angus Ranch, Roosevelt; sire: Basin Payweight 1682; ADG: 4.38 lb.; ADG ratio: 133; WDA: 3.97 lb.; wt.: 1,150 lb.; sale ratio: 132

HIGH-ADG AND HIGH-INDEXING SENIOR ANGUS Lot 232; owner: 5C Livestock, Redmond; sire: Coleman Charlo 0256; ADG: 4.06 lb.; ADG ratio: 127; WDA: 2.80 lb.; wt.: 1,015 lb.; sale ratio: 119

HIGH-WDA SENIOR ANGUS Lot 240; owner: Larsen Angus; sire: AAR Ten X 7008 SA; ADG: 2.10 lb.; ADG ratio: 66; WDA: 3.26 lb.; wt.: 1,145 lb.; sale ratio: 80

JUNIOR ANGUS AVERAGES (169 HEAD) ADG: 3.28 lb.; wt.: 1,118 lb.

OVERALL JUNIOR AVERAGES (230 HEAD) WDA: 3.06 lb.; wt.: 1,108 lb.

OVERALL SENIOR BULL AVERAGES (20 HEAD) WDA: 3.20 lb.; wt.: 1,110 lb.

The test sale is scheduled for March 17, 2018.

Bulls are being fed by breed. Breeds that do not have adequate numbers

to fill a pen (typically 50 head) are commingled with other breeds and fed together. There will be two divisions within the junior Angus breed test: the traditional growth division and a low-birth-weight (LBW) division.

For more information contact Kim Chapman, Utah State University Extension area animal scientist, at 435-892-0474 or kimc@ext.usu.edu; or Dale Kenison at 435-250-0090; or visit the test website, www.ubiabulls.com.

S.W. Virginia Bull Test

56-day report (Dec. 19, 2017)

The junior and senior tests of the Southwest Virginia Beef Cattle Improvement Association (BCIA) Bull Test, are conducted simultaneously at Hillwinds Farm, Dublin, Va. Senior bulls must have been born Sept. 1-Dec. 31, 2016. Junior bulls must have been born Jan. 1-March 31, 2017. Entries for both divisions were due Sept. 4. Delivery was accepted Oct. 3 at Hillwinds Farm. A total of 92 senior bulls and 143 junior bulls went on test Oct. 24.

The senior Angus bulls began the test with an average weight of 1,012 lb. The junior Angus bulls weighed on test with an average weight of 746 lb.

The last interim weight was scheduled for collection Jan. 16. The bulls will be weighed off test with an

Continued on page 118

Performance Report *continued from page 117*

average of weights collected Feb. 13 and 14.

HIGH-ADG AND HIGH-WDA SENIOR ANGUS Lot 17; owner: J&M Windy Acres, Mike Connatser, Maryville, Tenn.; sire: VAR Discovery 2240; ADG: 4.95 lb.; ADG ratio: 133; WDA: 3.32 lb.; WDA ratio: 117; wt.: 1,270 lb.

HIGH-ADG JUNIOR ANGUS Lot 166; owner: Virginia Tech Beef Center, Blacksburg; sire: Barstow Bankroll B73; ADG: 4.27 lb.; ADG ratio: 181; WDA: 3.17 lb.; WDA ratio: 114; wt.: 1,040 lb.

HIGH-WDA JUNIOR ANGUS Lot 90; owner: Silverado Cattle Co., Glenn and Rachel Covington, Orlean, Va.; sire: Schiefelbein Effective 61; ADG: 2.50 lb.; ADG ratio: 106; WDA: 3.34 lb.; WDA ratio: 120; wt.: 1,035 lb.

ANGUS SENIOR AVERAGES (55 HEAD) ADG: 3.71 lb.; WDA: 2.83 lb.; wt.: 1,209 lb.

OVERALL SENIOR AVERAGES (92 HEAD) ADG: 3.30 lb.; WDA: 2.75 lb.; wt.: 1,197 lb.

ANGUS JUNIOR AVERAGES (91 HEAD) ADG: 2.36 lb.; WDA: 2.78 lb.; wt.: 873 lb.

OVERALL JUNIOR AVERAGES (143 HEAD) ADG: 2.48 lb.; WDA: 2.83 lb.; wt.: 884 lb.

The test sale will be at the farm March 25.

For more information contact Scott Greiner, extension beef specialist, 366 Litton-Reaves Hall, Virginia Tech, Blacksburg, VA 24061; phone: 540-231-9159; fax: 540-231-3010; Joi Saville, extension associate, phone: 540-231-2257; Tim Sutphin, owner/manager, Hillwinds Farm, 5660 Thornsprng Church Rd., Dublin, VA 24084; 540-980-5848; or visit the test website at <http://bcia.apsc.vt.edu>.

Michigan Bull Test

56-day report (Dec. 22, 2017)

The Michigan Cattlemen's Association (MCA) and Michigan State University (MSU) announced the beginning of the MCA/MSU Bull

Evaluation Program, with 79 bulls weighing an average of 821 lb. Consignors must be paid members of the MCA and have their 2017 dues paid in advance. To be eligible for the test, bulls must have been born Sept. 1, 2016-March 31, 2017. There are 35 junior Angus bulls and 14 senior Angus bulls on test.

All bulls will be evaluated at the MCA/MSU Bull Evaluation Program Station located at Plank Farm, Crystal, Mich. The deadline for entries for the 112-day test was Sept. 1, with a delivery date of Oct. 13-14.

HIGH-ADG (TIE) SENIOR ANGUS Lot 11; owner: Rietberg Farms, Hudsonville; sire: VAR Index 3282; ADG: 5.13 lb.; ADG ratio: 109; WDA: 2.88 lb.; WDA ratio: 91; wt.: 975 lb.

HIGH-ADG (TIE) SENIOR ANGUS Lot 41; owner: Apple Hill Angus, Harrisville; sire: Woodside; ADG: 5.13 lb.; ADG ratio: 109; WDA: 2.81 lb.; WDA ratio: 89; wt.: 1,345 lb.

HIGH-ADG (TIE) SENIOR ANGUS Lot 44; owner: Bordner Farms LLC, Sturgis; sire: KB-Carcass Merritt A02; ADG: 5.13 lb.; ADG ratio: 109; WDA: 2.76 lb.; WDA ratio: 88; wt.: 1,230 lb.

HIGH-ADG (TIE) SENIOR ANGUS Lot 45; owner: Bordner Farms LLC, Sturgis; sire: KB-Carcass Merritt A02; ADG: 5.13 lb.; ADG ratio: 109; WDA: 2.88 lb.; WDA ratio: 92; wt.: 1,230 lb.

HIGH-WDA SENIOR ANGUS Lot 1; owner: Grand River Angus Farm, Grand Rapids; sire: Baldrige Download Z013; ADG: 5.00 lb.; ADG ratio: 106; WDA: 3.88 lb.; WDA ratio: 123; wt.: 1,435 lb.

HIGH-ADG JUNIOR ANGUS Lot 13; owner: Michigan State University, East Lansing; sire: PA Fortitude 2500; ADG: 5.09 lb.; ADG ratio: 146; WDA: 3.06 lb.; WDA ratio: 99; wt.: 1,020 lb.

HIGH-WDA JUNIOR ANGUS Lot 30; owner: Dawson Farms, Concord; sire: SAV Pedigree 4384; ADG: 3.93 lb.; ADG ratio: 113; WDA: 3.77 lb.; WDA ratio: 121; wt.: 1,240 lb.

OVERALL AVERAGES (79 HEAD) ADG: 3.74 lb.; WDA: 3.12 lb.; wt.: 1,027 lb.

The next interim report was scheduled for Jan. 19, 2018, with final weights to be taken Feb. 15-16. The sale is scheduled for March 18.

For more information contact Dan Buskirk, extension beef specialist; buskirk@msu.edu; 2265 Anthony Hall, Michigan State University, East Lansing, MI 48824; 517-432-0400; Brian Plank, manager, brianplank@rocketmail.com; 325 Mount Hope Rd., Crystal, MI 48818; phone: 989-235-6253 (office) or 989-506-2061 (cell); Michigan Cattlemen's Association, micattlemen@aol.com; 2145 University Park Dr., Ste. 300, Okemos, MI 48864; phone: 517-347-8117. Additional information can be found on the test website at <http://beef.msu.edu/bulleval>.

Manitoba Bull Test

56-day report (Dec. 27, 2017)

The Manitoba Beef Cattle Performance Association Bull & Heifer Development Test took delivery Oct. 2-5 of 125 bulls, 67 of them Angus* for the 2017-2018 test at its Douglas Bull Test Station in Carberry, Man., Canada. Consignors must be members of the Manitoba Beef Cattle Association, and bulls must have been born Jan. 1-April 30, 2017, to be eligible for the 112-day test.

HIGH-ADG ANGUS Lot 66; owner: Squirrel Creek Angus, Chris Moore, MacGregor, Man.; sire: Vision Unanimous 1418; ADG: 5.73 lb.; WDA: 3.26 lb.; wt.: 1,139 lb.

HIGH-WDA ANGUS Lot 21; owner: Black Creek Cattle Co., Carroll, Man.; sire: KBJ Body Builder 248B; ADG: 5.30 lb.; WDA: 3.96 lb.; wt.: 1,256 lb.

ANGUS AVERAGES (67 HEAD) ADG: 3.96 lb.; WDA: 3.30 lb.; wt.: 1,044 lb.

OVERALL AVERAGES (125 HEAD) ADG: 3.91 lb.; WDA: 3.23 lb.

The next tentative interim weigh date was scheduled for Jan. 23, 2018, with bulls scheduled to be weighed off test Feb. 19-20. The sale is scheduled for March 31.

For more information contact Ivan Ahnholz, station manager, office phone: 204-763-4696; cell: 204-724-6271; or Bev Walker, office manager, office phone: 204-763-4696; fax: 204-763-4102; bulltest@mynetset.ca; or visit the test website at www.manitobabulltest.com.

**Editor's Note: Both red and black Angus are tested as Angus in Canada.*

SIU Bull Test

56-day report (Nov. 28, 2017)

Southern Illinois University (SIU) in Carbondale accepted 57 bulls for testing Oct. 12-13, 2017. There are 37 junior bulls and 20 senior bulls on test on the 84-day test. Applications were due Sept. 8. The test began Oct. 30-31, 2017, with final weights scheduled for Jan. 22-23, 2018.

The bull test station team is student-run, with Rebecca Atkinson, associate professor of animal science, food and nutrition for beef cattle providing advisory oversight and hands-on training. The objective is to test the bulls' potential for producing superior calves that will grow fast and efficiently. To be eligible for the program, bulls must be registered with a recognized national breed association, come to the facility in good health and meet other criteria set by Atkinson and the bull test station advisory board.

HIGH-ADG JUNIOR ANGUS Lot 32; owner: Eagle River Angus, Princeville, Ill.; sire: AAR Ten X 7008 SA; ADG: 6.82 lb.; ADG ratio: 127; F/G: 4.29 lb.; F/G ratio: 118; wt.: 1,230 lb.

BEST F/G JUNIOR ANGUS Lot 25; owner: Betzold Farms, Nokomis, Ill.; sire:

VAR Generation 2100; ADG: 5.84 lb.; ADG ratio: 108; F/G: 4.07 lb.; F/G ratio: 124; wt.: 1,275 lb.

HIGH-ADG SENIOR ANGUS Lot 54; owner: Gajewski Farms, Ashley, Ill.; sire: AAR Ten X 7008 SA; ADG: 6.52 lb.; ADG ratio: 119; F/G: 5.55 lb.; F/G ratio: 108; wt.: 1,410 lb.

BEST F/G SENIOR ANGUS Lot 53; owner: Gajewski Farms, Ashley; sire: AAR Ten X 7008 SA; ADG: 6.02 lb.; ADG ratio: 109; F/G: 5.15 lb.; F/G ratio: 117; wt.: 1,435 lb.

JUNIOR ANGUS AVERAGES (67 HEAD) ADG: 5.39 lb.; WDA: 5.07 lb.; wt.: 1,129 lb.

SENIOR ANGUS AVERAGES (67 HEAD) ADG: 5.50 lb.; WDA: 6.02 lb.; wt.: 1,349 lb.

The sale is set for March 2, 2018, and will include an online video option.

For more information contact Atkinson at SIU-Carbondale; Department of Animal Science, Food & Nutrition; Mail Code 4417; 1205 Lincoln Dr.; Carbondale, IL 62901; phone: 618-453-5000; fax: 618-453-5231; or ratkinsn@siu.edu. Information is also available on the test website at <http://bulltest.siu.edu/>.

WIU Bull Test

56-day report (Dec. 13, 2017)

The 45th Western Illinois University (WIU) Bull Test, Macomb, Ill., received 72 bulls, representing the Angus, Simmental, Red Angus, Hereford, SimAngus and Charolais breeds, according to Keela Trennepohl, WIU School of Agriculture bull test station supervisor. The bulls officially began the test Oct. 19, 2017.

HIGH-ADG ANGUS Lot 404; owner: Can Am Cattle Co., Shelbyville, Ill.; sire: JMB Traction 292; ADG: 5.75 lb.; ADG ratio: 134; WDA: 3.63 lb.; wt.: 1,168 lb.

HIGH-WDA ANGUS Lot 303; owner: Kevin Washburn, Olney, Ill.; sire: Whitestone Widespread MB; ADG:

4.60 lb.; ADG ratio: 107; WDA: 4.02 lb.; wt.: 1,150 lb.

The bulls will be weighed every 28 days throughout the test, and the test website will be updated after each weigh date. Off-test weights are scheduled to be taken Feb. 7 and 8, 2018. The test sale is scheduled for March 9, 2018.

The WIU bull test station is open daily for those who want to view the bulls during the test period. For more information about the test and to follow the progress of the bulls, contact Trennepohl at 309-298-1288. The test website is www.wiu.edu/bulltest.

Edisto Forage Bull Test

On-test report (Dec. 19, 2017)

The 2018 Edisto Forage Bull Test (EFBT), located at the Edisto Research & Education Center near Blackville, S.C., accepted delivery of 60 bulls Dec. 5, 2017. The test began Dec. 19 with all bulls weighing an average of 780 lb. Senior bulls eligible for the test were born Nov. 1, 2016-Jan. 31, 2017. Junior bulls eligible for the test were born Feb. 1-March 31, 2017.

The test is a 168-day pasture-based test. EFBT was developed, built and started in 1982 with the commercial cow-calf producer in mind and capitalizing on the Southeast's advantage in its ability to grow high-quality, lush forages year-round. EFBT was designed to performance-test bulls in an environment in which bull buyers expect their progeny to perform.

Interim weigh dates have been scheduled for Jan. 16, Feb. 13, March 13, April 10 and May 8.

The bulls will be weighed off test June 5. The sale is scheduled for Oct. 14, 2018.

Continued on page 120

Performance Report *continued from page 119*

For more information contact Scott Sell at 803-284-3343, ext. 223 (office); 803-450-0995 (cell) or gsell@clemson.edu. Additional information is available on the test website at www.clemson.edu/extension/bulltest/index.html.

Kansas Angus Ass'n Bull Test

On-test report (Nov. 16, 2017)

There were 68 Angus bulls delivered to Kansas Bull Development LLC, Wamego, Oct. 13-14 for the Kansas Angus Association Bull Test. Nominations were due Oct. 2, 2017. The test will be conducted and managed at Kansas Bull Development LLC by Brian and Megan Hagedorn.

To be eligible for the 112-day test, bulls must have been born Jan. 1-April 15, 2017. Mid-test weights were to be collected Jan. 4, with final weights scheduled for Feb. 22, 2018. The test sale will take place March 28 at the Mitchell County Fairgrounds, Beloit, Kan.

Test results will be posted on the test website at www.kansasbulltest.com.

Tifton Bull Test

84-day report (Jan. 2, 2018)

The 60th Tifton Bull Evaluation Program at Tifton, Ga., began Oct. 9-10 with the delivery of 146 bulls representing eight different breeds and averaging 843 lb. The 112-day test features bulls born Dec. 1, 2016-Feb. 28, 2017. All bulls tested negative for persistent infection with bovine viral diarrhoea (PI-BVD).

Going on test Oct. 10, the 76 Angus bulls averaged 855 lb. for a WDA of 3.14 lb., while all 146 bulls averaged 843 lb. with a WDA of 3.06 lb. Final weights were scheduled for collection Jan. 29-30, 2018.

HIGH-ADG ANGUS Lot 78; owner: Gillis Angus Farm, Eastman, Ga.; sire:

Connealy Consensus 7229; ADG: 5.68 lb.; ADG ratio: 134; WDA: 3.79 lb.; WDA ratio: 112; wt.: 1,410 lb.

HIGH-WDA ANGUS Lot 146; owner: Acres Away Angus, Hampton, Ga.; sire: Herbster Prescription 5128; ADG: 4.89 lb.; ADG ratio: 116; WDA: 3.88 lb.; WDA ratio: 114; wt.: 1,275 lb.

ANGUS AVERAGES (72 HEAD) ADG: 4.23 lb.; WDA: 3.39 lb.; wt.: 1,211 lb.

OVERALL AVERAGES (140 HEAD) ADG: 4.15 lb.; WDA: 3.34 lb.; wt.: 1,197 lb.

Qualifying bulls will sell in the test sale March 7, 2018.

Visitors are welcome at the station 8 a.m. to 5 p.m., Monday through Friday. Contact Jacob Segers for more information at 2360 Rainwater Rd., Tifton, GA 31793; phone: 229-386-3683 or at jacobs@uga.edu. If weekend visits are desired, please call Mike Keeler at 229-831-5416. Bull and heifer reports can be accessed through the test website at www.ugabeef.com/programs.

Midland Bull Test

Group 1 intermediate report (Dec. 15, 2017)

The Midland Bull test in Columbus, Mont., is a 120-day gain test with a 70-day efficiency test. Bulls are fed a 44-Mcal diet that is high in roughage for targeted gains of about 3 lb. per day. Group 1 bulls were received Sept. 13-23, 2017. Group 2 bulls were received Oct. 14-23, 2017. Bulls qualifying for the test must be born Dec. 15, 2016-April 15, 2017.

HIGH-ADG GROUP 1 ANGUS Lot 225; owner: Stewart Select Angus, Greensburg, Ind.; sire: Deer Valley Patriot 3222; ADG: 5.15 lb.; WDA: 3.54 lb.; wt.: 1,235 lb.

HIGH-WDA GROUP 1 ANGUS Lot 282; owner: Olson Cattle Co., Saint Ignatius, Mont.; sire: HA Cowboy Up 5405; ADG: 2.89 lb.; WDA: 4.12 lb.; wt.: 1,063 lb.

The next Group 1 interim weights were scheduled for Jan. 5-12, with final weights to be taken Feb. 2-9.

The Angus sale is scheduled for April 6.

OPSU Bull Test

56-day report (Dec. 2)

The 85 beef bulls consigned to the 66th annual Oklahoma Panhandle State University (OPSU) Beef Bull Performance Test in Goodwell, Okla., were weighed on test Oct. 7. Consigned by 17 breeders, breeds represented were Angus, Hereford, Maine-Anjou and Red Angus. The 112-day test is scheduled to end Jan. 27, 2018.

HIGH-ADG SENIOR ANGUS owner: B&M Angus, Edmond, Okla.; sire: B&M Upshot 304; ADG: 7.46 lb.

HIGH-ADG JUNIOR ANGUS owner: William Gilmore, Canyon, Texas; sire: JAF 545 Tradition; ADG: 6.59 lb.

ANGUS SENIOR PEN owner: B&M Angus; avg. ADG: 6.62 lb.

ANGUS JUNIOR PEN Owner: B&M Angus; avg. ADG: 4.80 lb.

The sale is scheduled for Feb. 19, 2018. Those interested in following the performance of the bulls during the test can contact Gwen Martin at 580-349-1500 or gwen@opsu.edu.

Pennsylvania Bull Test

28-day report (Nov. 28, 2017)

The Pennsylvania Department of Agriculture, in cooperation with the Department of Dairy and Animal Science of the Pennsylvania State University, the Pennsylvania Cattlemen's Association and the state breed associations, announced the Oct. 10, 2017, delivery of 188 bulls, 118 of them Angus, for the 2017-2018 Winter Pennsylvania Performance Bull Test conducted at Pennsylvania Furnace, Pa.

PERFORMANCE REPORT INDEX

• Calhoun Bull Test & Sale _____ 117	• Michigan Bull Test 56-day report _____ 118	• S.W. Virginia Bull Test 56-day report _____ 117
• Clemson Bull Test 112-day report _____ 116	• Midland Bull Test Group 1 intermediate report _____ 120	• SIU Bull Test 56-day report _____ 119
• Edisto Forage Bull Test on-test report _____ 119	• Nebraska Bull Test 60-day report _____ 116	• Tifton Bull Evaluation Program 84-day report _____ 120
• IBEP Winter Test 28-day report _____ 116	• OPSU Bull Test 56-day report _____ 120	• Tucumcari Bull Test 29-day report _____ 121
• Kansas Angus Ass'n Bull Test on-test report _____ 120	• Pennsylvania Bull Test 28-day report _____ 120	• UBIA Bull Test Mid-test report _____ 117
• Manitoba Bull Test 56-day report _____ 118	• Pennsylvania Bull Test 56-day report _____ 121	• WIU Bull Test 56-day report _____ 119

To be eligible for the winter test, bulls must be born Jan. 1-April 15, 2017. The nomination period for the winter test was Aug. 1-Aug. 20, 2017, with an on-test date of Oct. 31. At the 28-day mark, test leaders included the following.

HIGH-ADG ANGUS Lot 243; owner: Weaverland Valley Farms, Brady Ebersole, New Holland; sire: Baldrige Jennings 2064; ADG: 8.02 lb.; ADG ratio: 196; WDA: 3.77 lb.; WDA ratio: 120; wt.: 1,029 lb.

HIGH-WDA ANGUS Lot 114; owner: JK Cattle Co., Jim and Jolene Kuhn, Conneautville; sire: AAR Ten X 7008; ADG: 5.63 lb.; ADG ratio: 137; WDA: 4.00 lb.; WDA ratio: 127; wt.: 1,104 lb.

ANGUS AVERAGES (118 HEAD) ADG: 4.10 lb.; WDA: 3.15 lb.; wt.: 867 lb.

56-day report (Dec. 26, 2017)

HIGH-ADG ANGUS Lot 103; owner: Brakel Ridge Cattle Co., Jacob Christy, Cincinnatus, N.Y.; sire: HF Tiger 5T; ADG: 5.95 lb.; ADG ratio: 145; WDA: 3.40 lb.; WDA ratio: 105; wt.: 1,215 lb.

HIGH-WDA ANGUS Lot 114; owner: JK Cattle Co., Jim and Jolene Kuhn, Conneautville; sire: AAR Ten X 7008; ADG: 5.31 lb.; ADG ratio: 130; WDA: 4.09 lb.; WDA ratio: 127; wt.: 1,244 lb.

ANGUS AVERAGES (118 HEAD) ADG: 4.09 lb.; WDA: 3.23 lb.; wt.: 981 lb.

The final 112-day weights are to be taken Feb. 20, with the sale to take place March 30.

Questions should be addressed to Greg Hubbard, station manager, 1494 West Pine Grove Rd., Pennsylvania Furnace, PA 16865;

phone: 814-238-2527; or ghubbard@pa.gov. For more information visit the test website at www.livestockevaluationcenter.com/BullTesting.aspx.

Tucumcari Bull Test

29-day report (Nov. 25, 2017)

New Mexico State University's Agricultural Science Center at Tucumcari is benefiting from a public/private partnership to evaluate beef cattle feed efficiency genetics. Since 1961, the New Mexico Beef Cattle Performance Association (now the Tucumcari Feed Efficiency Test LLC) has tested bulls to estimate feedlot performance of their progeny based on pen feed efficiency as the average of up to four animals. In 2015, facilities were upgraded with GrowSafe® technology allowing measurement of individual animal feed efficiency with planned expansions to allow for a concurrent testing capacity of 160 head.

The concept behind genetic testing for feed efficiency is herd improvement at the farm/ranch level, which should translate into higher feeder-cattle prices or reduced feed costs at the feedlot level. Improved beef cattle feed efficiency also will help increase global food production, particularly protein, without having to increase crop production acreage or yield per acre.

Bulls are being managed in separate contemporary groups rather than one complete test group as in years past. Bulls in the large pens are the bulls tested for feed-to-gain

efficiency (F/G). Group A includes older bulls that were placed in the feed-efficiency testing pen to measure intake for the first 60 days of the test. Group B consists of the younger calves scheduled to be evaluated for efficiency during the last 60 days of the overall test. Group C is considered the individually tested bulls.

HIGH-ADG GROUP A ANGUS Lot 5-1; owner: Riverside Angus, Alex and JoEllen Netherton, Las Animas, Colo.; ADG: 6.28 lb.; ADG ratio: 156; F/G: 3.06; wt.: 940 lb.

BEST F/G GROUP A ANGUS Lot 20-5; owner: Hartzog Angus/Running Water Land & Cattle, Bovina, Texas; F/G: 2.95; wt.: 876 lb.

HIGH-ADG GROUP B ANGUS Lot 14-2; owner: Cody Drager, Las Animas, Colo.; ADG: 6.72 lb.; ADG ratio: 142; wt.: 896 lb.

BEST F/G GROUP C ANGUS Lot: 18-12; owner: Sanchez Angus, Patrick and Theresa Sanchez, Belen, N.M.; F/G: 3.51; wt.: 736 lb.

ANGUS AVERAGES (126 HEAD) ADG: 4.02 lb.; wt.: 804 lb.

OVERALL AVERAGES (158 HEAD) ADG: 3.93 lb.; wt.: 802 lb.

The test sale is scheduled for March 10.

For more information contact Marcy Ward, extension livestock specialist, New Mexico State University, Las Cruces, NM 88003; office phone: 575-646-5947 or cell: 575-644-3379; or visit the test website at <http://tucbulltest.nmsu.edu>. 