

Reduce Cold Stress

K-State Research and Extension specialists share tips for managing livestock in winter.

by Pat Melgares, K-State Research and Extension

Livestock producers are entering a time of year that, because of winter weather, can often be challenging for maintaining the health of their herds, but a host of management steps and best practices can help to get the animals through the tough times.

“Talking to a regional climatologist, we foresee a lot of fluctuation in weather,” said A.J. Tarpoff, a beef veterinarian with Kansas State University (K-State) Research and Extension. “The fluctuations from warm to cold are stressful on any animal, so you have to be ready for that fluctuation.

“If it gets cold and it stays cold, we can manage that very easily. The animals get used to the cold, dry environment. But when we start mixing warm to cold, and a little bit of moisture — in other words, we combine wind, cold and a wet animal — that leads to a little bit of trouble.”

Livestock that can be housed indoors — such as chickens, swine and dairy cattle — may be protected from severe elements, but keeping them properly ventilated can be challenging.

“It’s hard to keep the fans and the ventilation adjusted appropriately because the incoming air is still somewhat warmer during the day, but then it cools off during the night as we get the different weather fronts coming through,” said Joel DeRouchey, a livestock specialist with K-State Research and Extension.



DeRouchey notes that fluctuations in indoor temperatures can cause mortalities in herds because the animals get stressed from the roller-coaster shifts.

“Changes in the outside temperature lead to humans developing respiratory challenges,” he said. “It’s the same for livestock, whether they’re inside or outside.

“The most important thing is maintaining a constant temperature. The goal is to bring animals inside to protect them from the elements, so we need to make sure our ventilation systems are managed correctly to provide that ideal environment.”

Bedding key outdoors

DeRouchey said that indoor ventilation also is important to keep air moisture, odor and nitrogen levels low.

For animals kept outside in feedlots, Tarpoff said one key is to provide dry bedding.

“Cattle have the right winter coat for cold weather, but whenever it starts to get windy, wet and cold, especially on frozen ground, the cattle want to find a nice, dry area to

lie down and rest,” he said. “Bedding those pens, giving them the opportunity to lie down and rest decreases the stress on those cattle and allows them to increase their comfort level so they can perform at a high rate even in stressful conditions.”

Tarpoff added that a box scraper is an important part of the equation in feedlots. Pens should be scraped routinely to level frozen areas, which will help to reduce foot injuries and the reluctance of animals to move to feed and water.

In outdoor pastures, the two K-State specialists suggest portable windbreaks, which provide shelter and can help with basic biosecurity.

“When cattle congregate in one area of the pasture for a long period of time, you build up environmental contaminants from manure,” Tarpoff said. “So move the portable windbreaks to different locations in the pasture so that you decrease the environmental contamination, which is especially important for newborn calves and control of scours.”

DeRouchey notes that portable windbreaks can force cattle to walk out of low areas to water and feed.

“It doesn’t hurt those cows to walk out of those low areas,” he said. “From an environmental standpoint, once we start providing a lot of feed or stationary feeders in those low areas, the manure buildup and the sanitation degrades really fast.”

During severe cold periods,

producers need to feed a little more hay or other forage so that the animals' natural heat source — the rumen — can do its work. Cattle may be fed near windbreaks during times of extreme cold and snow, but DeRouche notes that shouldn't happen very often during the season.

Tarpoff added that water is equally important for livestock in the winter months as it is in the summer months.

"They are eating a lot more, so they need to be able to drink a lot more to balance the body's homeostasis," he said. "Check waterers regularly that

they are not frozen over, there's plenty of flow, and there's plenty of volume for animals to drink from. A frozen tank can be detrimental to any livestock operation."

The two K-State specialists also shared some ideas to help producers get themselves through the colder months. Specific to the upcoming calving season, one tip is to feed cattle in the evenings.

"Changing our feeding strategies to the evening hours, right at dusk, will increase the number of calves born during the daylight hours, which is when the producers are out checking

those cattle more regularly," Tarpoff said.

DeRouche also reminded producers to make sure flashlights are in working order, and store extra batteries and clothing in case they get stranded or need to be out for extended periods in cold and snowy weather.

For more severe weather tips, producers may contact their local extension agent. **AJ**

Editor's Note: Pat Melgares is coordinator of news media and marketing services for K-State Research and Extension (www.ksre.ksu.edu).

Stone Gate Farms

Annual Production Sale

12:30 p.m. • Monday • March 5, 2018

At the farm 1669 Mill Creek Rd. • Flemingsburg, KY

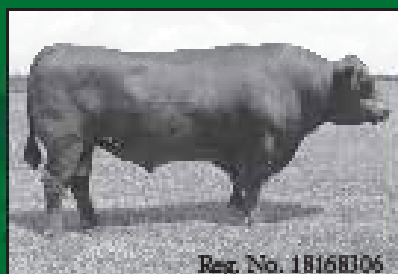
Selling 128 LOTS:

60 BULLS • 30 FALL YEARLINGS • 30 SPRING YEARLINGS • 10 COWS with fall calves

20 BRED HEIFERS will start calving by sale day

18 BRED HEIFERS will calve in the fall of 2018 • 20 OPEN HEIFERS

The cattle selling represent more than 60 years breeding cattle in a real world environment that emphasize the traits that have made the Angus breed so dominant today. Feminine, functional moderate-framed, nice-uddered females that will wean 10 or more calves during their lifetime has been our trademark.

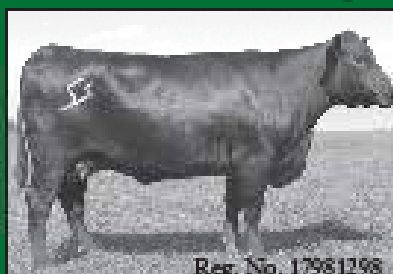


Reg. No. 18168306

Mc Cumber Unmistakable 573

CED	BW	WW	YW	MILE
+10	-3	+47	+52	+22

Service sire on most of the fall calving cows and heifers.



Reg. No. 17981298

Stone Gate Eurotia 344

CED	BW	WW	YW	MILE
+8	+1.3	+49	+87	+25



Reg. No. 17981250

Stone Gate Miss Burgess 134

CED	BW	WW	YW	MILE
+7	+3	+50	+88	+28

EPDs as of 01/08/2018



Stone Gate Farms

1669 Mill Creek Rd. • Flemingsburg, KY
 Charles Cannon • Home 808-848-4272 • Cell 808-748-0747
 Jere Cannon • Home 808-848-4380 • Cell 808-748-8308
 Chris Cannon • Cell 808-748-0407
 Victoria Cannon Cell 808-748-5420
 email: stonegateangus@gmail.com • Fax 808-848-1880

For More Information or Sale Book:

View Our Sale Book at StoneGateFarms.com
 or www.angus.media

View our sale on

