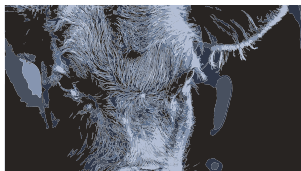


ASSOCIATION HIGHLIGHTS



Compiled by Kasey Brown, special projects editor

BLI applications due

Applications for the 11th annual Beef Leaders Institute (BLI) June 18-22, 2018, are now being accepted.

Sponsored by Certified Angus Beef LLC (CAB) and the Angus Foundation, BLI is designed for American Angus Association members 25-45 years old as a means to provide participants insight to all segments of the beef industry. Attendees will be stronger, more effective leaders for the Angus breed and for the beef industry now and in the future.

The Association and the Angus Foundation will provide

transportation, lodging, meals and materials during the BLI. Attendees will be responsible for round-trip transportation between their home and the beginning and ending points.

The BLI is limited to 20 attendees each year. Applications are available online or by contacting Caitlyn Brandt in the Events and Education Department at 816-383-5189. Feb. 15 is the application deadline.

Women Connected

The fourth biennial Women Connected conference will take place in Excelsior Springs, Mo., April 18-20.

The event brings together full-time

ranchers, ranchers' wives, parents of juniors and college-age women to share the common bond of Angus cattle. The event has been hosted every other year since 2012, and has alternated between Saint Joseph, Mo., and Wooster, Ohio. Attendance is granted by application only and is limited to 20 attendees.

Applications are available at www.angusauxiliary.com/about/women-connected.html and are due Feb. 15.

Watch I Am Angus

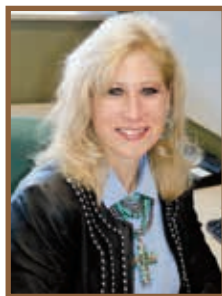
We all come from somewhere. That includes Angus cattle and

Kathy LaScala hired as corporate sales manager

Kathy LaScala joins Angus Productions Inc. (API) as corporate sales manager. LaScala began her role Jan. 3 and will be overseeing industry sales operations to ensure profit maximization and realization of sales targets. In her role, LaScala will be working with corporate accounts to position advertising, sponsorship and marketing opportunities across all API platforms. She also will attend major shows, events and meetings.

"Kathy brings a wealth of experience to our team, and we are excited to be able to put her deep knowledge of developing corporate clients to use growing our corporate relationships," said Rick Cozzitorto, API president. "She already has hit the ground running as we continue to enhance our offerings."

LaScala grew up on a dairy farm in western New York and earned a bachelor's degree in animal science from Cornell University. For more than 11 years, she was on the Vance Publishing sales team with her main focus being Drovers and Bovine Veterinarian. While at Vance, LaScala was responsible



for developing, maintaining and growing a portfolio of national accounts. She represented the brands at industry trade shows, conferences and industry events each year. Most recently, she was a member of the sales team at Lee Newspapers Inc.

In addition, LaScala was responsible for selling more than 80% of the exhibitor space for the inaugural Angus Convention Trade Show, which resulted in securing an even larger venue for 2015 and several spaces being forward-contracted by the close of the 2014 show.

She has received many awards and achieved many accomplishments in her career, including the 2017 Livestock Publications Council Ed Bible Distinguished Service Award; 2015-2016 Kansas Agriculture & Rural Leadership (KARL) Class XIII; judge of 2017 Kansas State FFA Extemporaneous Speaking Finals; 2014 National FFA judge, sales & marketing, career development event; and 2012-2013 Livestock Publications Council president.

At a glance

breeders. *I Am Angus | Fabric of Our Forebears* dives into the rich heritage of the Angus breed and the varied people who now raise Angus across the world. From the original Aberdeen-Angus herds in Scotland to the plains of South Dakota, down to the bayou and everywhere in between, the Angus story is told from eight breeders' perspectives in the latest film produced by the American Angus Association.

The film tells the stories of how the eight cattlemen and women from varied lineages are connected by a common thread, the heritage and legacy of the Angus breed. We learn about the origins of the Angus breed at Dunlouis Angus and Ballindalloch Castle in Scotland before moving to the United States to the Biltmore Estate, Subiaco Abbey, Diamond Peak Cattle Co. and 12 Star Angus, and then we hear from Salvador Galindo and Kelsey Ducheneaux about their Angus stories.

"We are excited to premiere our most comprehensive *I Am Angus* film to date with eight stories of those carrying on the longstanding Angus tradition," said Josh Comminellis, Association video production director. "As natives and immigrants, Angus cattle and their breeders have shaped the Association of today, and the *I Am Angus | Fabric of our Forebears* honors that history."

The original description of the *I Am Angus* concept, initially developed by the Angus Media team in early 2010, was to produce "personal portraits of the individuals responsible, directly or indirectly, for the production of Angus beef told across the mediums of film, photography and print."

I Am Angus | Fabric of our Forebears can be viewed on angus.org and Angus TV on Vimeo and Youtube.

FEBRUARY 2018

- 1 Application deadline for Association, AGI, Angus Foundation and Angus Media internships
- 15 Beef Leaders Institute (BLI) application due
- 15 Raising the Bar (Oklahoma City, Okla.) registration deadline
- 15 MAJAC Show, Harrisonburg, Va.
- 15 Women Connected applications due

MARCH 2018

- 1 Nominations for Advisors of the Year due
- 1 Nominations Honorary Angus Foundation recipients due

APRIL 2018

- 18-20 Women Connected, Excelsior Springs, Mo.
- 20-21 American Angus Auxiliary Spring Meeting, Saint Joseph, Mo.

MAY 2018

- 1 Allied Angus Breeders scholarship applications due
- 1 American Angus Auxiliary scholarship applications due
- 1 Angus Foundation scholarship applications due

Scholarship available

The Angus Foundation Board of Directors approved funds to provide \$1,000 scholarships to three youth who use Angus genetics in their seedstock or commercial operations. Awards will be distributed in July 2018.

Applicants must be enrolled in a junior college, four-year college/university or other accredited institution for the fall of 2018.

They can be an entering freshman or a continuing student in any undergraduate program. The applicant or applicant's parents/guardians must have transferred or been transferred an Angus registration paper in the last 36 months.

Full details can be found at www.angusfoundation.org. Information can be found in the resources section on the home page. The Allied Angus Breeders Scholarship application is available online and is due May 1.

Skeletal EPDs in the works

Angus breeders have been submitting foot and leg scores since early 2015 and enough data points have been gathered to create research expected progeny differences (EPDs). This means weekly production EPDs are closer to fruition. For more information on the usefulness of foot scoring and the status of research behind it, see the article "Solid Foundation," on page 90 of this issue.

Nominate individuals

Any state junior Angus association can nominate its advisor(s) to be honored as the National Junior Angus Association (NJAA) Advisor(s) of the Year. The award is presented at the National Junior Angus Show (NJAS) and recognizes the time, effort and dedication adult volunteers give to their state junior Angus association.

Individuals can also nominate Angus enthusiasts for the Honorary Angus Foundation. This award is also presented during the NJAS and recognizes those who have made extraordinary contributions to junior Angus programs. Nomination

Continued on page 186

CURRENT ASSOCIATION FEES

Following are the correct fees for various American Angus Association services. Be sure to send the correct amount of money with the work being requested, as incorrect payments are the main cause of delays.

REGISTRATIONS

Applications for animals less than 4 months of age	\$7
Applications for animals 4-10 months of age.	\$9
Applications for animals 10-12 months of age.	\$14
Applications for animals more than 12 months of age	\$27

TRANSFERS

Applications received less than 30 days from sale date	\$5
Applications received 30-60 days from sale date.	\$7
Applications received more than 60 days from sale date	\$12

MISCELLANEOUS

Angus Herd Improvement Records (AHIR®) fee (per weaning weight)	\$3
Artificial insemination (AI) service certificate	\$10
Regular annual membership	\$80
Regular annual membership with <i>Angus Journal</i> subscription.	\$130
Lifetime membership (optional to pay in three \$500/year installments)	\$1,500
Junior annual membership (less than 21 years of age).	\$20
Embryo-transfer (ET) calfregular registration fee plus \$10	
Cell-clone transplant calfregular registration fee plus \$50	

Rules of the American Angus Association are included in the *Breeder's Reference Guide*. Free copies are available from the Association. An online version is available through the "Rules and Forms" link at www.angus.org.

BREEDER'S REFERENCE

Symbols are used with a registration number to denote important information about an animal.

SYMBOL MEANING

#	Pathfinder cow or Pathfinder sire
+	Embryo transfer calf
^	Cell clone
%	Split-ET
@	Clone-ET
*	Parentage qualified to both parents and the mating

The American Angus Association currently recognizes the following genetic conditions:

CODE MEANING

AM	Arthrogryposis multiplex
CA	Contractural arachnodactyly
D2	PRKG2 gene mutation for dwarfism
DD	Developmental duplication
DM	Double muscling
DW	Dwarfism
HG	Horn gene
HI	Heterochromia irides
M1	nt821 mutation for double muscling
NH	Neuropathic hydrocephalus
OH	Oculocutaneous hypopigmentation
OS	Osteopetrosis
RD	Red gene
SN	Syndactyly
WT	Wild type color gene

The following single-letter descriptors appearing after a genetic condition code shall have the following meaning:

P	refers to a "potential" carrier based on an ancestor known to carry that specific mutation.
F	refers to an animal tested for one or more genetic conditions and determined to be "free" of that specific mutation.
C	refers to an animal tested for one or more genetic conditions and determined to be a "carrier" of that specific mutation.
A	refers to an animal tested for one or more genetic conditions and determined to be a carrier of two copies of that specific mutation. It may or may not exhibit the phenotype associated with that genetic condition.

The following letter designations describe cases in which there is more than one genetic condition present:

XF	Free of more than one genetic condition.
XC	Carrier of more than one genetic condition.
XA	Affected of more than one genetic condition.
RTF	Recessive trait free (produced 35 or more calves from daughters without a genetic defect).

forms are available by contacting the Events and Education Department at 816-383-5100. Nominations for both honors are due to the Events and Education Department by March 1.

Auxiliary scholarships

The American Angus Auxiliary annually awards scholarships to graduating high school seniors. The postmark deadline for the national contest is May 1.

Junior Angus members must first be chosen as a state auxiliary scholarship winner before advancing to the national competition. Applications are available at www.angusauxiliary.com. State Angus auxiliary scholarship contacts are listed in this issue on page 252.

2018 Black Books available

You can now order 2018 AngusSource®/Beef Record Service (BRS) black books. The pocket-sized books include a calendar, as well as space to keep management records on your cow herd. They feature the American Angus Association logo on the back.

Producers can request two free books and purchase additional books for \$3 each. The 2018 books are available in any quantity.

To place orders, contact the American Angus Association at 816-383-5100 or blackbooks@angus.org.

Foundation scholarships

The Angus Foundation will award a number of undergraduate and graduate scholarships this year. Scholarship recipients will be recognized at the 2018 NJAS in Madison, Wis.

The eligibility requirements for the general Angus Foundation scholarships remain the same. Angus youth who are graduating from



high school or in college currently may also be eligible for other Angus-related scholarships that are permanently endowed and managed by the Angus Foundation.

The Foundation will make available graduate student scholarships to young men and women actively involved in the Angus breed who are pursuing advanced degrees.

Applicants must have at one time been an NJAA member and must currently be a junior, regular or life member of the Association. Strong preference and priority will be given to applicants pursuing advanced degrees related closely to the beef industry.

The Angus Foundation undergraduate and graduate

student scholarship application and guidelines are available at www.angusfoundation.org. The application deadline is May 1.

For more information contact the Angus Foundation at 816-383-5100.

F designated for 2018

International letters are designated for each year of birth for livestock identification (ID). These designated letters are an easy option to use in conjunction with numbers when permanently identifying animals. For example, F001 and F002 could designate the first two calves born into your herd in the year 2018.

Using the international letter code is optional for Angus breeders.

For information about permanent ID (Rule 105) and naming animals (Rules 102 and 107), access the online *Breeder's Reference Guide*. To access from www.angus.org, click on

“Member Services,” in the pull-down menu under “Member Center.”

Herds of the century

The American Angus Association initiated the Century Award to recognize its members and their families who have been in continuous production of registered Angus cattle for at least 100 years. Award recipients will be recognized with an engraved plaque at the Association's Annual Awards Banquet, notice will be given in the *Angus Journal*, and a list will be maintained on the Association's website.

Contact the Events and Education Department for more information or for applications. This year's awards were presented during the Awards Recognition Breakfast in Columbus, Ohio.

Look for it on the American Angus Association's website, angus.org.

Wheatland Farms Angus Production Sale

Noon • Tuesday, March 13, 2018, at Farmers and Ranchers Livestock Commission Company, Salina, KS

100 HEAD SELL

70 Service-Age Bulls ~~Besta Payweight 1682~~ – Featuring his progeny

25 Fall Cow/Call Pairs

Select Bred and Open Heifers

Featured Sires Include:
 Baldrige Command
 Baldrige Willie Y34
 Besta Payweight 1682
 Connealy Black Granite
 HA Cowboy Up 5405
 Hoover Dam
 KCF Bennett Absolute
 KG Solution 0018
 KM Broken Bow 002
 PA Fall Power 1208
 Quaker Hill Rampage 0A36
 RB Tour of Duty 177
 SAV Final Answer 0035
 SAV Bismarck 5682
 EF Commando 1366

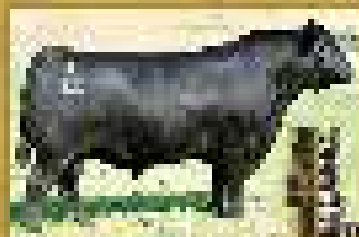
With Special Guests:
 Hedgewood Prairie, Monty Morrill and Shaver Angus



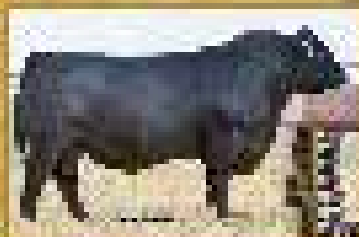
Wheatland Farms
 Larry Shippy
 1446 1100th Ave • Hope, KS 67451
 Cell (785) 479-1725

For your free reference sale booklet, contact anyone in the office of the Sale Manager, TOM BURKE, KURT SCHAFF, JEREMY HAAG, AMERICAN ANGUS HALL OF FAME, at the WORLD ANGUS HEADQUARTERS, PO Box 660, Smithville, MO 64089-0660. Phone: (816) 532-0811. Fax: (816) 532-0851. E-Mail angushall@earthlink.net.

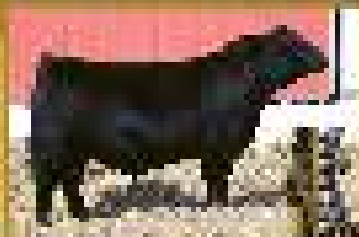
America's Convenient A.I. Registry



Kennedy Black Granite
 2016 National Grand Champion
 American Angus!



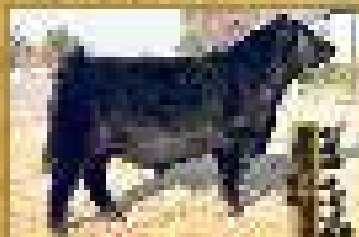
Musgrave Aviator
 2015 National Grand Champion
 American Angus!



RB Absolute Advantage
 2015 National Grand Champion
 American Angus!



Byron Blackstone 622
 2015 National Grand Champion
 American Angus!



DCN Blue Chip
 2015 National Grand Champion
 American Angus!



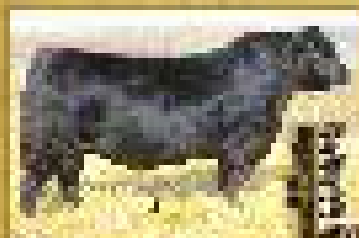
Blue Jay Unbelievable 422
 2015 National Grand Champion
 American Angus!



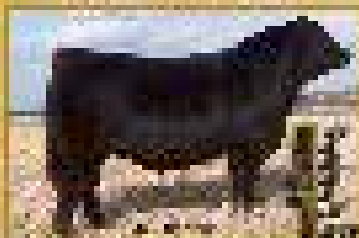
WTC CIVIL First Class Act
 2015 National Grand Champion
 American Angus!



Circle M Tejas
 2015 National Grand Champion
 American Angus!



RB Tour Of Duty 177
 2015 National Grand Champion
 American Angus!



Night 600 Dooberger 622
 2015 National Grand Champion
 American Angus!



Jindra Apollo
 2015 National Grand Champion
 American Angus!



Hyline Flight Answer 272
 2015 National Grand Champion
 American Angus!



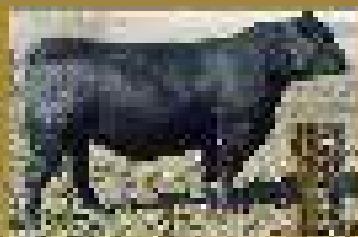
TGM Compton 112
 2015 National Grand Champion
 American Angus!



Valley Overbrook 1418
 2015 National Grand Champion
 American Angus!



Jindra Contender
 2015 National Grand Champion
 American Angus!



RB Night Prowler 322
 2015 National Grand Champion
 American Angus!



Corby Cow TLWhiskey 2018
 2018 National Grand Champion
 American Angus!



Hickory Dawn
 2018 National Grand Champion
 American Angus!



Musgrave 600 Team 2018
 2018 National Grand Champion
 American Angus!



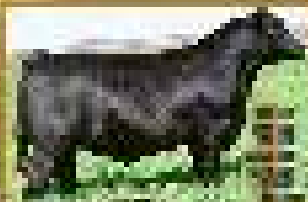
BCA Flashback
 2018 National Grand Champion
 American Angus!



HT Tiger HT
 875 lbs BW 100 lbs WW
 Body condition excellent
 American Angus



2021 Tiger
 800 lbs BW 100 lbs WW
 Excellent condition and shape



HTF Grand Baron HT
 870 lbs BW 100 lbs WW
 Top production quality Angus



HTF Lady Paige
 850 lbs BW 100 lbs WW
 Excellent condition and shape
 100% Angus



Missouri Day High 1 year
 850 lbs BW 100 lbs WW
 Excellent condition and shape
 100% Angus



HT No Pride Rock High 1 year
 850 lbs BW 100 lbs WW
 Excellent condition and shape
 100% Angus



HTF Easy Cheek 1 year
 850 lbs BW 100 lbs WW
 Excellent condition and shape
 100% Angus



HTF Prime 1 year
 850 lbs BW 100 lbs WW
 Excellent condition and shape
 100% Angus



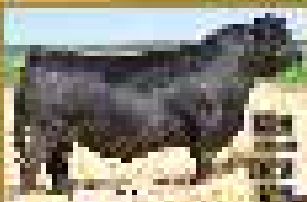
HTF Red Hot 1 year
 850 lbs BW 100 lbs WW
 Excellent condition and shape
 100% Angus



HTF Red Hot 1 year
 850 lbs BW 100 lbs WW
 Excellent condition and shape
 100% Angus



HTF Red Hot 1 year
 850 lbs BW 100 lbs WW
 Excellent condition and shape
 100% Angus



HTF Red Hot 1 year
 850 lbs BW 100 lbs WW
 Excellent condition and shape
 100% Angus



HTF Red Hot 1 year
 850 lbs BW 100 lbs WW
 Excellent condition and shape
 100% Angus



HTF Red Hot 1 year
 850 lbs BW 100 lbs WW
 Excellent condition and shape
 100% Angus



HTF Red Hot 1 year
 850 lbs BW 100 lbs WW
 Excellent condition and shape
 100% Angus



HTF Red Hot 1 year
 850 lbs BW 100 lbs WW
 Excellent condition and shape
 100% Angus



HTF Red Hot 1 year
 850 lbs BW 100 lbs WW
 Excellent condition and shape
 100% Angus



HTF Red Hot 1 year
 850 lbs BW 100 lbs WW
 Excellent condition and shape
 100% Angus



HTF Red Hot 1 year
 850 lbs BW 100 lbs WW
 Excellent condition and shape
 100% Angus



HTF Red Hot 1 year
 850 lbs BW 100 lbs WW
 Excellent condition and shape
 100% Angus



HTF Red Hot 1 year
 850 lbs BW 100 lbs WW
 Excellent condition and shape
 100% Angus



HTF Red Hot 1 year
 850 lbs BW 100 lbs WW
 Excellent condition and shape
 100% Angus



HTF Red Hot 1 year
 850 lbs BW 100 lbs WW
 Excellent condition and shape
 100% Angus

Angus
 The World's Best
 Beef Breed



ANGUS
 The World's Best
 Beef Breed

The Denver Stock Show



CELENE POWERFACE 1204

REG. 100 100 100 100 100 100 100 100 100 100
 100 100 100 100 100 100 100 100 100 100

CELENE POWERFACE 1204 is a black Angus cow with a powerful build, excellent udder, and a strong disposition. She is a true champion and a true champion's daughter.



ST POWER CH#4-300

REG. 100 100 100 100 100 100 100 100 100 100
 100 100 100 100 100 100 100 100 100 100

ST POWER CH#4-300 is a black Angus cow with a powerful build, excellent udder, and a strong disposition. She is a true champion and a true champion's daughter.



CELENE'S WITCH-HOLT 0814

REG. 100 100 100 100 100 100 100 100 100 100
 100 100 100 100 100 100 100 100 100 100

CELENE'S WITCH-HOLT 0814 is a black Angus cow with a powerful build, excellent udder, and a strong disposition. She is a true champion and a true champion's daughter.



HILLBURY COW FINE EXAM

REG. 100 100 100 100 100 100 100 100 100 100
 100 100 100 100 100 100 100 100 100 100

HILLBURY COW FINE EXAM is a black Angus cow with a powerful build, excellent udder, and a strong disposition. She is a true champion and a true champion's daughter.



FCF INTLITY CH 3-15

REG. 100 100 100 100 100 100 100 100 100 100
 100 100 100 100 100 100 100 100 100 100

FCF INTLITY CH 3-15 is a black Angus cow with a powerful build, excellent udder, and a strong disposition. She is a true champion and a true champion's daughter.



WYLINE PIONEER FLY CH#8 1205

REG. 100 100 100 100 100 100 100 100 100 100
 100 100 100 100 100 100 100 100 100 100

WYLINE PIONEER FLY CH#8 1205 is a black Angus cow with a powerful build, excellent udder, and a strong disposition. She is a true champion and a true champion's daughter.



COMBLES SAFE 8-17

REG. 100 100 100 100 100 100 100 100 100 100
 100 100 100 100 100 100 100 100 100 100

COMBLES SAFE 8-17 is a black Angus cow with a powerful build, excellent udder, and a strong disposition. She is a true champion and a true champion's daughter.



NEVADA HARBOR CH#2000

REG. 100 100 100 100 100 100 100 100 100 100
 100 100 100 100 100 100 100 100 100 100

NEVADA HARBOR CH#2000 is a black Angus cow with a powerful build, excellent udder, and a strong disposition. She is a true champion and a true champion's daughter.



WY ABUNDANT 4-400

REG. 100 100 100 100 100 100 100 100 100 100
 100 100 100 100 100 100 100 100 100 100

WY ABUNDANT 4-400 is a black Angus cow with a powerful build, excellent udder, and a strong disposition. She is a true champion and a true champion's daughter.



WY MILLIONAIRE 4-400

REG. 100 100 100 100 100 100 100 100 100 100
 100 100 100 100 100 100 100 100 100 100

WY MILLIONAIRE 4-400 is a black Angus cow with a powerful build, excellent udder, and a strong disposition. She is a true champion and a true champion's daughter.



WY OF HONOR BIRTHDAY LIGHT

REG. 100 100 100 100 100 100 100 100 100 100
 100 100 100 100 100 100 100 100 100 100

WY OF HONOR BIRTHDAY LIGHT is a black Angus cow with a powerful build, excellent udder, and a strong disposition. She is a true champion and a true champion's daughter.



MUSGRAVE SKY HIGH 155

REG. 100 100 100 100 100 100 100 100 100 100
 100 100 100 100 100 100 100 100 100 100

MUSGRAVE SKY HIGH 155 is a black Angus cow with a powerful build, excellent udder, and a strong disposition. She is a true champion and a true champion's daughter.

WISCONSIN WORKZONE



BSF OPPORTUNIST 23

WBC 100 100 100 100 100 100 100 100 100 100
 100 100 100 100 100 100 100 100 100 100

BSF OPPORTUNIST 23 is a young bull with a great disposition and a great body. He is a great sire for a young bull.



STYLES CASH BAWO

WBC 100 100 100 100 100 100 100 100 100 100
 100 100 100 100 100 100 100 100 100 100

STYLES CASH BAWO is a young bull with a great disposition and a great body. He is a great sire for a young bull.



CHESTNUT KNACK OUT 304

WBC 100 100 100 100 100 100 100 100 100 100
 100 100 100 100 100 100 100 100 100 100

CHESTNUT KNACK OUT 304 is a young bull with a great disposition and a great body. He is a great sire for a young bull.



SOC TRADITION OF 24

WBC 100 100 100 100 100 100 100 100 100 100
 100 100 100 100 100 100 100 100 100 100

SOC TRADITION OF 24 is a young bull with a great disposition and a great body. He is a great sire for a young bull.



SLAMMING FIRST REACTION 2818

WBC 100 100 100 100 100 100 100 100 100 100
 100 100 100 100 100 100 100 100 100 100

SLAMMING FIRST REACTION 2818 is a young bull with a great disposition and a great body. He is a great sire for a young bull.



KRANERS APOLLO'S 17

WBC 100 100 100 100 100 100 100 100 100 100
 100 100 100 100 100 100 100 100 100 100

KRANERS APOLLO'S 17 is a young bull with a great disposition and a great body. He is a great sire for a young bull.



K BARD JOE CANNON 187

WBC 100 100 100 100 100 100 100 100 100 100
 100 100 100 100 100 100 100 100 100 100

K BARD JOE CANNON 187 is a young bull with a great disposition and a great body. He is a great sire for a young bull.



ORACLE IN TEARS

WBC 100 100 100 100 100 100 100 100 100 100
 100 100 100 100 100 100 100 100 100 100

ORACLE IN TEARS is a young bull with a great disposition and a great body. He is a great sire for a young bull.



BSF HOT LOTTO 1481

WBC 100 100 100 100 100 100 100 100 100 100
 100 100 100 100 100 100 100 100 100 100

BSF HOT LOTTO 1481 is a young bull with a great disposition and a great body. He is a great sire for a young bull.



EAR BOAT HOT TABLE 1308

WBC 100 100 100 100 100 100 100 100 100 100
 100 100 100 100 100 100 100 100 100 100

EAR BOAT HOT TABLE 1308 is a young bull with a great disposition and a great body. He is a great sire for a young bull.



EARL CLAR SENI 4326

WBC 100 100 100 100 100 100 100 100 100 100
 100 100 100 100 100 100 100 100 100 100

EARL CLAR SENI 4326 is a young bull with a great disposition and a great body. He is a great sire for a young bull.



EAR LONG BARGE

WBC 100 100 100 100 100 100 100 100 100 100
 100 100 100 100 100 100 100 100 100 100

EAR LONG BARGE is a young bull with a great disposition and a great body. He is a great sire for a young bull.

Championship Genetics taking you to the next level!

Champion **5759**



Proven ability to
get the most
from the feed
to make the best
steak and roasts
and to sire the next
generation!



Proven ability
to get the most
from the feed
to make the best
steak and roasts
and to sire the
next generation!



Proven ability to
get the most from
the feed to make
the best steak and
roasts and to sire
the next generation!



Proven ability
to get the most
from the feed to
make the best
steak and roasts
and to sire the
next generation!

Reverse First Place & Highest Score from 2018 by Age

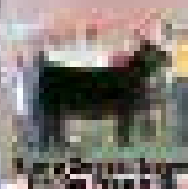
Champion **5809**



Proven ability to
get the most from
the feed to make
the best steak and
roasts and to sire
the next generation!

Reverse First Place & Highest Score from 2018 by Age

Champion **5810**



Proven ability to
get the most from
the feed to make
the best steak and
roasts and to sire
the next generation!

Reverse First Place & Highest Score from 2018 by Age

Champion **5811**



Reverse First Place & Highest Score from 2018 by Age



Reverse First Place & Highest Score from 2018 by Age

Reverse First Place & Highest Score from 2018 by Age



CATTLE *Visions*

866-356-4565

www.cattlevisions.com

Calving—Easy Rewards Optional

CATTLE *Angus*

866 356 4565

cattlevisions.com

WT

BCA Fearless 119



CW +11
BB
+11.24

TC Alameda x TC Freedom • Reg. No. +1191119

BCU HLA Next Up 015



CW +10
BB
+10.28

Monaghan x C. K. Shores • Reg. No. 0150115

ST Power Chip 4750



CW +11
BB
+11.24

Donnell Chip x SC Power • Reg. No. 4750470

Travis World Pig Over 188



CW +11
BB
+11.24

Travis High x BR Phoenix • Reg. No. +1881880

PDF Intuition 345



CW +11
BB
+11.24

PDF Power x Touchdown • Reg. No. +1760399

HB Gayman 485



CW +11
BB
+11.24

SCARL x SCARL 27 2750 Reg. 4851 • Reg. No. 4850480

Green Pasture 1007



CW +11
BB
+11.24

Travis High x Carl Phoenix • Reg. No. 10071007

W Blue Warrior 430



CW +11
BB
+11.24

WJ Phoenix x High 11 Power • Reg. No. 4304300

WASC Star



CW +11
BB
+11.24

Wascopower x SCARL Star • Reg. No. 1740174

LD Captain 316



CW +11
BB
+11.24

Green Pasture 1007 x Amos Power • Reg. No. 3163160

HSP Journey



CW +11
BB
+11.24

WJ Phoenix x SCARL Power

Wash Cowman 100



CW +11
BB
+11.24

WJ Apple Chip x WJ Wash 100 • Reg. No. 1001000

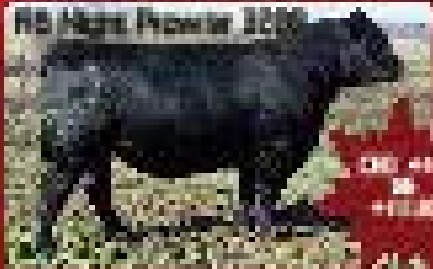
Patric Pride Next Step 2026



CW +11
BB
+11.24

Patric 100 x SCARL Power Reg. 2026 • Reg. No. 2026200

WB Night Provider 320



CW +11
BB
+11.24

Green Pasture x SCARL Power • Reg. No. +1201200

Comely Black Granite



CW +11
BB
+11.24

Comely Granite x SCARL Power • Reg. No. 1001000

EXCELLE Quality 171



CW +11
BB
+11.24

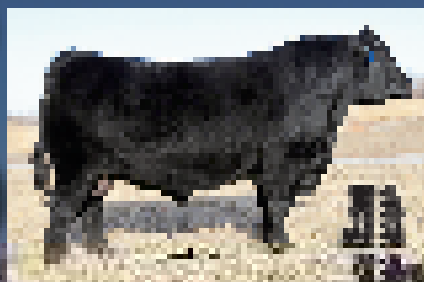
WJ Phoenix x Comely 100 • Reg. No. 1711710

EPIC Sires

acquired at the

NATIONAL WESTBARN

Big boy in spring season his good structural performance is going with more eye appeal and power forward by 2017 and 2018.



Black Angus Bull
Reg. No. 10000000



Black Angus Bull
Reg. No. 10000000



Black Angus Bull
Reg. No. 10000000



Black Angus Bull
Reg. No. 10000000

Black Angus Bull
Reg. No. 10000000



Black Angus Bull
Reg. No. 10000000

Black Angus Bull
Reg. No. 10000000



Black Angus Bull
Reg. No. 10000000



Black Angus Bull
Reg. No. 10000000

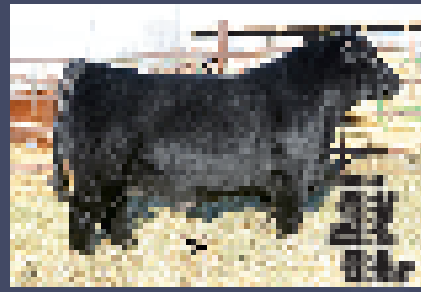


Black Angus Bull
Reg. No. 10000000



Black Angus Bull
Reg. No. 10000000

Black Angus Bull
Reg. No. 10000000



Black Angus Bull
Reg. No. 10000000

Black Angus Bull
Reg. No. 10000000



Black Angus Bull
Reg. No. 10000000

Black Angus Bull
Reg. No. 10000000



Black Angus Bull
Reg. No. 10000000

Black Angus Bull
Reg. No. 10000000



Black Angus Bull
Reg. No. 10000000

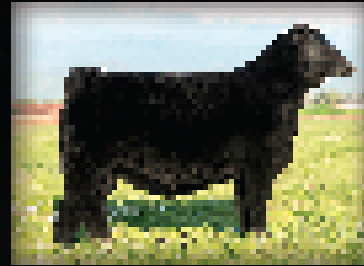
Black Angus Bull
Reg. No. 10000000



Black Angus Bull
Reg. No. 10000000

Black Angus Bull
Reg. No. 10000000

Colburn Primos



Colburn Primos
 1000 1000
 1000 1000
 1000 1000

CATTLE *Visions*

800 800 4000

Colburn Primos

COLBURN

PRIMO 5153

PRIMO - Denver First Class 895 | PRIMO - Denver Santa Dream 899
 AAA Head - 827 2450 | 508 512 8215



PRIMO - Denver First Class 895



PRIMO - Denver Santa Dream 899



PRIMO - Denver Santa Dream 899



PRIMO - Denver Santa Dream 899



PRIMO - Denver Santa Dream 899



PRIMO - Denver Santa Dream 899

PRIMO - Denver Santa Dream 899 is a registered Angus cow with a proven pedigree and a proven record. This cow has a proven record of producing high quality offspring and is a proven sire of champions. PRIMO - Denver Santa Dream 899 is a proven sire of champions and is a proven sire of champions. PRIMO - Denver Santa Dream 899 is a proven sire of champions and is a proven sire of champions.



WISCONSIN

SKY HIGH

1535 2018/2019

1535 2018/2019



1535 2018/2019

1535 2018/2019



1535 2018/2019

DATE	PL	PL	PL	PL	PL
1535	1535	1535	1535	1535	1535

1535	1535	1535	1535
------	------	------	------



1535 2018/2019

CATTLE Visions

088.356.4565

www.cattlevisions.com



1535 2018/2019



1535 2018/2019



1535 2018/2019

5T POWER CHAMP

4790



DESCRIPTION
 Excellent sire
 Excellent sire
 Excellent sire

000

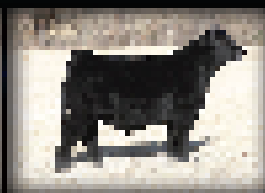


Angus 4790

3048 3048 3048 3048 3048

3048 3048 3048 3048 3048 3048 3048 3048 3048 3048
 3048 3048 3048 3048 3048 3048 3048 3048 3048 3048
 3048 3048 3048 3048 3048 3048 3048 3048 3048 3048

PROGENY



• All Angus bulls are registered with the Angus Cattle Society of America (ACSA) and are eligible for the Angus Cattle Society of America (ACSA) award program.
 • All Angus bulls are registered with the Angus Cattle Society of America (ACSA) and are eligible for the Angus Cattle Society of America (ACSA) award program.

Angus Cattle Society of America (ACSA) award program



CATTLE *Visions*

cattlevisions.com

866-356-4565



The Legacy Continues

AT THE

SpringLake Angus

& Guests Sale

April 6, 2018

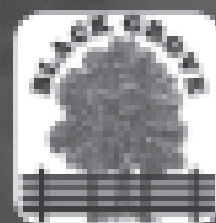
1 P.M. CT

Located at the
SpringLake Angus Center.

50475 887 RD Lynch NE 68746

Selling

Yearling Heifers,
Yearling Bulls,
2-Year-Old Bulls,
Cow/Cal Pairs



Walter Shealy (803) 924-1000
Dixon Shealy (803) 629-1174

Represented Sires

R R Rito 707
George of Swiftbrook
Basin Rainmaker 654X
Traveler 124 G D A R
Rito 707 of Ideal 3407 7075
SAY Resource 1441
SAY Randown 3439
H A Cowboy Up
Rito Revolt W2
Shoshone Viking GD60
OCC Emblazon 854-E
Active Duty
Tour of Duty
D H D Traveler 6807



Dave Graber (812) 444-9295



To receive a sale book contact us!
springlake@threeriver.net
www.springlakeangus.com

Gene Timperley (402) 336-7951
Kelcey Timperley (402) 394-1880
Home (402) 569-3442