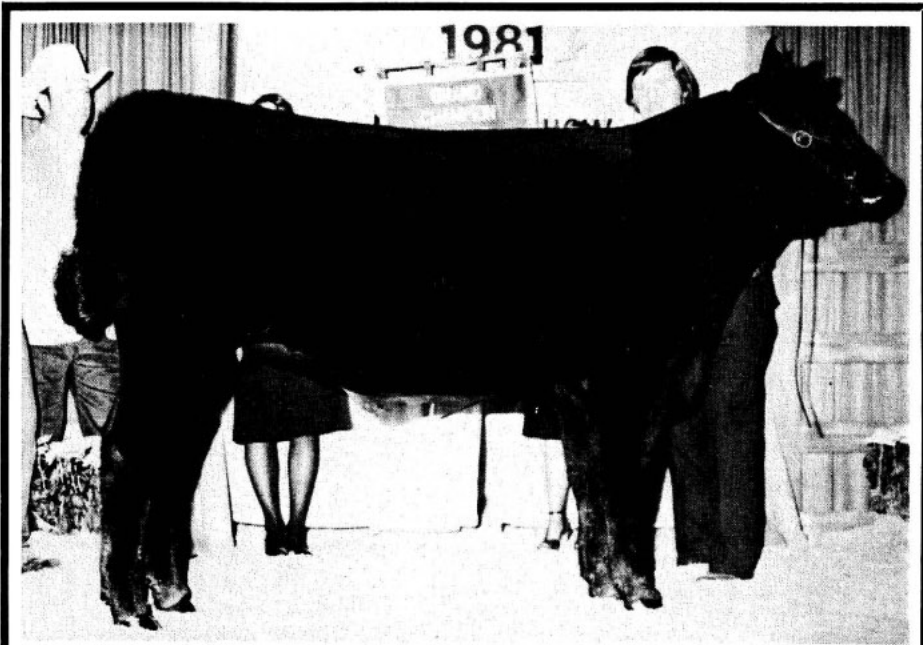


Angus Events at the North American International Exposition

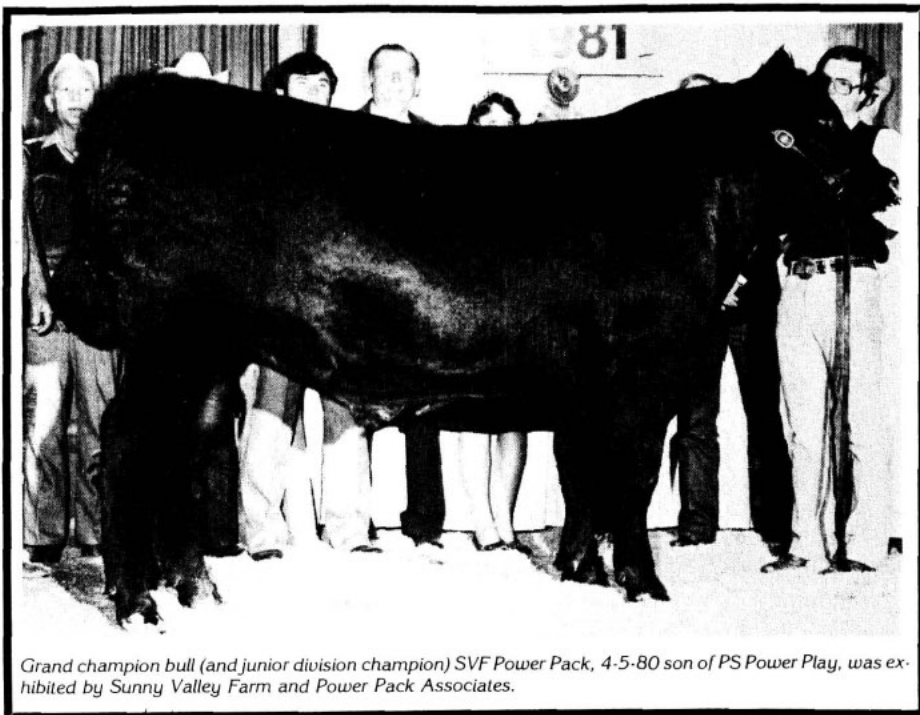
by Ann Gooding

The Kentucky Fair and Exposition Center, Louisville, was the place to be Nov. 16 and 17. Those were the dates of the Angus show at the North American International Livestock Exposition and the annual meetings of the American Angus Assn. and the American Angus Auxiliary.



Grand champion female (and junior division champion) Kruegers Scaara of Sayre, 4-26-80 daughter of Sayre Patriot, was exhibited by Greg Krueger & Family and Genetics Unlimited, Inc.





Grand champion bull (and junior division champion) SVF Power Pack, 4-5-80 son of PS Power Play, was exhibited by Sunny Valley Farm and Power Pack Associates.

Day 1 of this 2-day open show ended with the extremely popular Kruegers Scaara of Sayre taking the female show grand championship, repeating her win at the American Angus Breeders' Futurity held at the same facility three and a half months earlier.

Scaara, a Sayre Patriot daughter, was bred by Greg Krueger who through his employment at Sayre Farms, Phelps, N.Y., owned her Sayre-bred dam, Scaara 4691 of Sayre. When the herd at Phelps dispersed last spring to Garney Cattle Co., Afton, Okla., Greg and his family opted to stay in the northeast where he now manages the beef cattle division of Genetics Unlimited, Inc., West Grove, Pa., who co-owns Scaara with Krueger. (A new embryo transplant firm with a staff of three veterinarians, Genetics serves all breeds of both beef and dairy cattle.)

According to Krueger, Scaara, who is in calf to Rosebank Connection 69 "10" (this show's reserve grand champion and supreme champion at the American Angus Breeders' Futurity last summer) will show in Denver. She will then undergo extensive embryo transplant—there have been just two transplants to date. One is by "10," the other by Ken Caryl Mr. Angus 8017 and they are due in March and April.

Heifer show reserve went to youngster TC Peg 0111 shown by a very pleased Vance Uden, TC Ranch, Franklin, Neb. This big PS Power Play daughter fought off strong (and older) competition for her banner, but then she's shown consistently well for Uden this season—she was reserve heifer calf champion at the Futurity, and stood calf champion at the Nebraska State Fair and the Royal, both strong heifer shows.

Day 2's results may not have been predicted by many. Junior champion SVF Power Pack took the grand championship, edging out the older Futurity grand champion, Rosebank Connection 69 "10", who was senior champion, then stood reserve grand for Rally Farms, Millbrook, N.Y., Rosebank Angus Farm, Germantown, N.Y., and Timber Valley Farms, Dawn, Mo.

Out of a female purchased at side of dam from Graham Angus Farm, Albany, Ga., this youngster was home-bred and exhibited by Sunny Valley Farms, Yorkville, Ill. He had shown promise at the Futurity last summer where he was reserve late junior champion, and was subsequently leased by Select Sires, Inc., Plain City, Ohio. Just prior to this show a syndicate bought a half interest at private treaty. And when Sunny Valley's Wayne Strawn led this PS Power Play son to the championship, members of the group appeared secure in the knowledge that they'd made a sound decision. The group (Power Pack Associates) includes Berry Angus, Chico, Texas; Bill Brewster and Grady Brewster, both of Marietta, Okla.; Drake Farms, Davis, Okla.; Christa Morehead, Clairmore, Okla.; Sugar Loaf/Great Western Corp., Panama, Okla.; Mark Wheeler, Wynnewood, Okla., and ZR Angus, Marlow, Okla.

Although numbers were down from the previous year (when this had been the National Angus Show) classes were strong and the judge had his work cut out for him. Harvey Lemmon, Woodbury, Ga., a relative newcomer to the ranks of those judging shows national in scope was up to the challenge, moving through the 95 females and 59 bulls smoothly, quickly, and with authority.

North American



In the get-ready area are (from left) Darwin Schweitzer, Four Sum Cattle Co., Cave Junction, Ore.; Steve Weaver, Weaver Angus Farm, Peoria, Ill.; E.G. Foote, Foote Angus Acres, Melba, Idaho; and Dick Burns, Weaver Angus Farms, Peoria, Ill.



Not only did Harvey Lemmon, Woodbury, Ga., judge the North American open show, he also was elected to the American Angus Assn. Board of Directors during the annual meeting held during the North American.

Pat Scheer, Gunston-West, Lampasas, Texas, and Al Maurer, Magnolia, Texas



FEMALES

Class 1—calved 3-9-81 to 5-10-81 (10 shown): 1, Summitcrest Farms, Summitville, Ohio, on Summitcrest Royal Lady N120, by PS Power Play. 2, Richard White, Ghent, N.Y., on Fleetwood Blackcap 5131, by Sir Wms Warrant. 3, R&J Ranch, Briggs, Texas, on R&J Blossom 1361, by General JJ Patton.

Class 2—calved 2-2-81 to 3-5-81 (7 shown): 1, Gunston-West, Lampasas, Texas, on R&J Laura 2470, by General JJ Patton. 2, Weaver Angus Farm, Peoria, Ill., on Blackbird Lady 1526 DAR, by QAS Traveler 23-4. 3, White on Fleetwood Blackcap 161.

Class 3—calved 1-4-81 to 1-20-81 (11 shown): 1, South Fork Ranch, Mocksville, N.C., on South Fork Julie, by Briarhill Jay. 2, R&J on R&J Erroline 61, by General JJ Patton. 3, Rally Farms, Millbrook, N.Y., on Rally Tibbie 5031, by Rally Consort 618.

Class 4—calved 11-1-80 to 12-14-80 (6 shown): 1, Accent Angus Farm, Oakland, Ill., on Accent Miss Rosebud 60, by Sir Wms Warrant. 2, White and Peace of Eight Farm, Ghent, N.Y., on Fleetwood Blackcap 1880, by Ken Caryl Mr. Angus 8017. 3, Todd Dawes, Urbana, Ind., on DD Miss Karama 650, by Superstud.

Class 5—calved 9-2-80 to 10-15-80 (9 shown): 1, TC Ranch, Franklin, Neb., on TC Peg 0111, by PS Power Play. 2, Premier Angus Inc., Cloverdale, Ind., and Prim Lassie Breeders on Premier Lassie 2928U, by LEMAR Eileenmere Lad 549. 3, Tricia Lynn Russell, Bedford, Iowa, on Warrants Mistress, by Sir Wms Warrant.

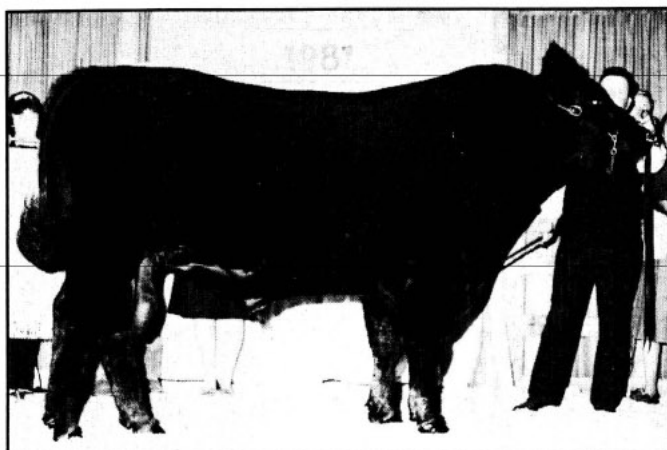
Class 6—calved 7-3-80 to 8-14-80 (5 shown): 1, Jackie Ellis, Greentown, Ind., on E&W Enchantress J46, by LEMAR Eileenmere Lad 549. 2, South Fork on Briarhill Jayne, by Briarhill Jay. 3, Todd Dawes on Pride Bradley 72B, by Happyvale Black Grandeur 046H.

Class 7—calved 5-21-80 to 6-8-80 (6 shown): 1, Premier Beef Cattle, Fowlerville, Mich., on Tree Lane Jalava 550, by LEMAR Eileenmere Lad 549. 2, Bruce Haas, LeRoy, Ill., on HA Miss Lucy, by Briarhill Jay. 3, Gunston-West and Empire Angus, Pleasant Hill, Mo., on R&J Blackcap 1530, by General JJ Patton.

Class 8—calved 5-2-80 to 5-15-80 (8 shown): 1, South Fork and Clermont Farms, Versailles, Ky., on Briarhill Genie, by General JJ Patton. 2, Laura Haas, LeRoy, Ill., on HA Miss Laura, by Sir Wms Elector. 3, Premier Beef and Tree Lane Farms, El Paso, Ill., on Tree Lane Premier Progress, by Premier Progressor.

Class 9—calved 4-1-80 to 4-26-80 (13 shown): 1, Genetics Unlimited and Krueger & Family, on Kruegers Scaara of Sayre, by Sayre Patriot. 2, Danny Knop, Ida Grove, Iowa, on KAF Miss Wampum 0100 525, by Sir Wms Wampum. 3, Frederick Johnson III, Summitville, Ohio, on Summitcrest Miss Angus M252, by Ken Caryl Mr. Angus 8017.

Class 10—calved 3-5-80 to 3-29-80 (11 shown): 1, R&J on Diamond Duchess Q25, by Ken Caryl Prospector 8317. 2, Premier Beef on Premier Blackcap 0405, by PS Power Play. 3, R&J, James Sipe and Kevin Swaim & Family, Marshall, Ind., on R&J Blackbird 700, by Premier Jackpot.



Reserve grand champion bull (and senior division champion) Rosebank Connection 69, 4-3-79 son of Bon View Connection, was exhibited by Rally Farms, Rosebank Angus Farm and Timber Valley Farms.



Reserve grand champion female (and senior heifer calf champion) TC Peg 0111, 9-8-80 daughter of PS Power Play, was exhibited by Vance Uden, TC Ranch.

Class 11—calved 1-8-80 to 2-22-80 (9 shown): 1, Timber Valley Farms, Dawn, Mo., and UT Ranch, Tuttle, Okla., on Lady Diana of Fabius Creek, by Ken Caryl Mr. Angus 8017. 2, Gunston-West on Prairie Pride Miss Covergirl, by Ken Caryl Mr. Angus 8017. 3, Joel Stivers, Pittstown, N.J., on Classy Lass MG 980, by Sir Wms Wampum.

Junior Calf Champion: Summitcrest on Summitcrest Royal Lady N120.

Reserve Junior Calf Champion: White on Fleetwood Blackcap 5131.

Senior Calf Champion: TC Ranch on TC Peg 0111.

Reserve Senior Calf Champion: Accent on Accent Miss Rosebud 60.

Intermediate Champion: South Fork and Clermont on Briarhill Genie.

Reserve Intermediate Champion: Laura Haas on HA Miss Laura.

Junior Champion: Genetics Unlimited and Krueger & Family on Kruegers Scaara of Sayre.

Reserve Junior Champion: Timber Valley and UT on Lady Diana of Fabius Creek.

Grand Champion: Genetics Unlimited and Krueger & Family on Kruegers Scaara of Sayre.

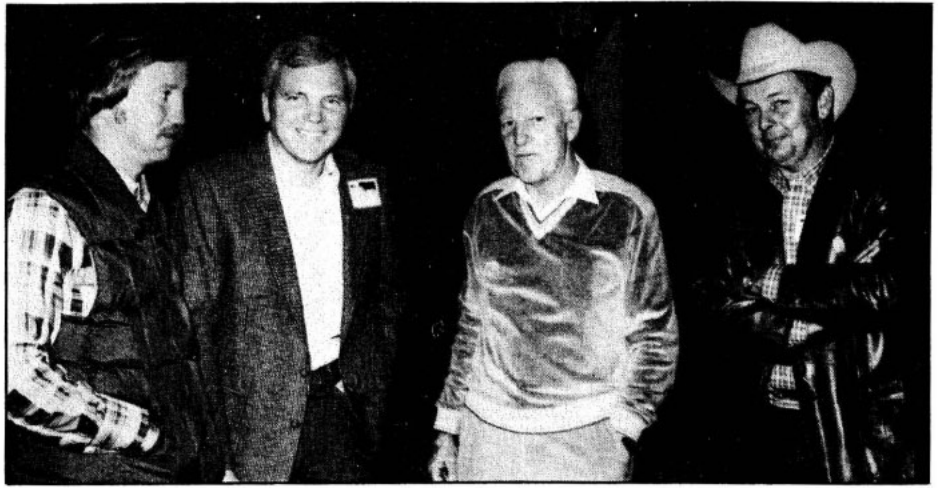
Reserve Grand Champion: TC Ranch on TC Peg 0111.

BULLS

Class 1—calved 3-26-81 to 4-29-81 (7 shown): 1, Robert Zeedyk, and Jeff Lineback, New Carlisle, Ind., on Mr. Strikeback 81, by Craft Lucky Strike. 2, Darle Dawes & Family, Urbana, Ind., on DD Sir Lightfoot 331, by Lazy R Lightfoot 105. 3, Sunny Valley Farm, Yorkville, Ill., on SVF High Card, by Briarhill JJ.

Class 2—calved 2-25-81 to 3-16-81 (6 shown): 1, JR Angus, Mooresboro, N.C., on J&R Bold Image, by General JJ Patton. 2, Fairfield Farms, Lakeville, Conn., Johnson Angus and BoBo Angus, Ardmore, Ala., Watts, Payne & Meng, Bowling Green, Ky. on Fairfield Good News, by Fairfield Hi Guy. 3, Way-View Farms, Hebron, Ohio, on Way View Prophecy, by Byergos 36 Prophet.

Class 3—calved 1-2-81 to 2-14-81 (10 shown): 1, R&J on R&J Austin 13, by General JJ Patton. 2, Weaver/Conklin/Tinker, Peoria, Ill., and Rally on Rally Tensetter 5471, by Rosebank Connection 69. 3, Weaver/Conklin/Tinker and Rally on Rally Ultimate 5631, by Rosebank Connection 69.



From left are Greg Krueger, Oxford, Pa., (who showed the grand champion heifer) and Oklahomans Gary and Fred Sumner and Tom Drake, three of the several members of Power Pack Associates, co-owner of the grand champion bull.



Vance Uden (left) Franklin, Neb., shown with Dean Pike of the ANGUS JOURNAL, was still smiling about the selection of his TC Peg 0111 as reserve grand champion.



From left are Dave Richmond, Rally Farms, Millbrook, N.Y., and Kevin O'Bryan and Jerry Lehmann, Timber Valley Farms, Dawn, Mo.



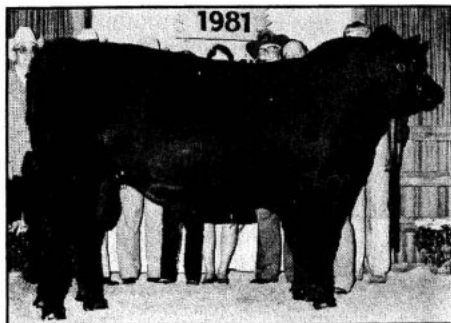
Intermediate champion bull Pine Drive Big Sky, 7-4-80 son of LEMAR Eileenmere Lad 549, was exhibited by Premier Angus, Inc. and Leroy Billman.



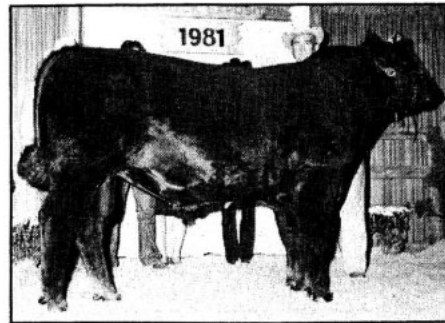
Senior bull calf champion Fleetwood High Interest, 11-4-80 son of Ken Caryl Mr. Angus 8017, was exhibited by Richard White of Fleetwood Farms and High Interest Breeders.



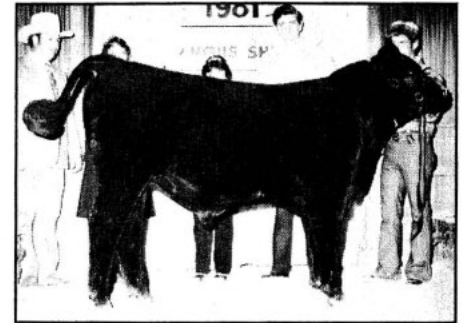
Junior bull calf champion Mr. Strikeback 81, 4-2-81 son of Craft Lucky Strike, was exhibited by Robert Zeedyk and Jeff Lineback.



Reserve junior champion bull MSU Legacy, 2-4-80 son of Thomas Chaps, was exhibited by Michigan State University, Blugrass Angus Farm, Gene Triplett and Wilbur Fruhling & Sons.



Reserve intermediate champion bull Supreme Advancer, 5-26-80 son of Sir Wms Elector, was exhibited by Doug Davis.



Reserve senior bull calf champion Gunston Tall Texan, 9-25-80 son of General JJ Patton, was exhibited by Gunston-West.

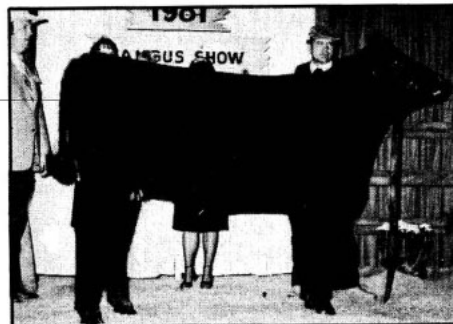
North American



One of the younger spectators was Justin Pelon, shown here with his dad John, who works for Omega Farms, Williamston, Mich.



Reserve junior calf champion R&J Austin 13, 1-8-81 son of General JJ Patton, was exhibited by R&J Ranch.



Intermediate champion female Briarhill Genie, 5-11-81 daughter of General JJ Patton, was exhibited by South Fork Ranch and Clermont Farm.



Junior heifer calf champion Summitcrest Royal Lady N120, 3-12-81 daughter of PS Power Play, was exhibited by Summitcrest Farms.

Would Brian Swartz (left), LeRoy, Ill., and Sam Wagner, Harlan, Kan., be discussing a recent purchase?



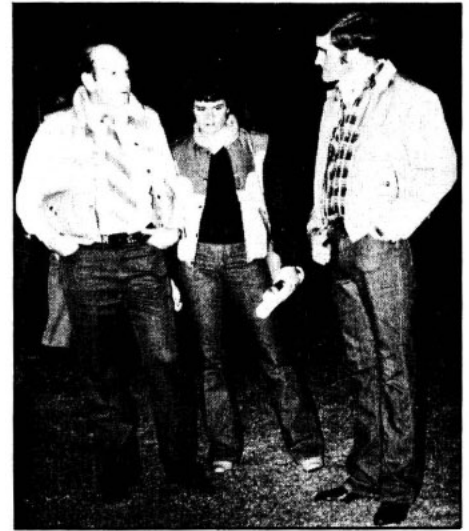
Jake Herndon (left) Berea, Ky., and Tom Gammon, Jackson, Tenn., talk things over before the annual meeting.



Howard Hillman (left) Canova, S.D., and Bob Miller, Mabel, Minn.



Visiting with Galen Fink (right) Manhattan, Kan., are Jim Sprake and daughter Darla, Faucett, Mo.



Banquet guests included Gerald Carroll, Elmwood, Ill.; Bill Henry, Cambridge, Ill.; and J. Coder Hamilton, Good Hope, Ill.



Class 4—calved 10-27-81 to 11-19-80 (3 shown): 1, Fleetwood and High Interest Breeders on Fleetwood High Interest, by Ken Caryl Mr. Angus 8017. 2, Doug Davis, Big Island, Va., on Black Jack 21, by Ken Caryl Mr. Angus 8017. 3, Buffalo Run Ranch, Inman, S.C., on Buffalo Black Shaman, by Briarhill Jay.

Class 5—calved 9-12-80 to 9-25-80 (5 shown): 1, Gunston-West on Gunston Tall Texan, by General JJ Patton. 2, R&J and Joe Meng, Bowling Green, Ky., on R&J Blastoff 2040, by General JJ Patton. 3, Premier Angus, Inc., on Premier Skyhigh 2940U, by LEMAR Eileenmere Lad 549.

Class 6—calved 7-4-80 to 8-27-80 (3 shown): 1, Premier Angus, Inc., and LeRoy Billman, Ostrander, Ohio, on Pine Drive Big Sky, by LEMAR Eileenmere Lad 549. 2, Weaver and Weir Fruit & Angus Farm, Gladstone, Ill., on Weirs Hightimes D65, by LEMAR Eileenmere Lad 549. 3, Michigan State University, East Lansing, Mich., on MSU Proclamation, by Ken Caryl Mr. Angus 8017.

Class 7—calved 5-6-80 to 6-7-80 (5 shown): 1, Davis on Supreme Advancer, by Sir Wms Elector. 2, Richard Haas and Lovana Farms, Inc., Clarkesville, Ga., on HA Double Jay, by Briarhill Jay. 3, Rally on Rally Connection 5430, by Bon View Connection.

Class 8—calved 4-1-80 to 4-22-80 (5 shown): 1, Sunny Valley and Power Pack Associates on SVF Power Pack, by PS Power Play. 2, Premier Angus, Inc., and Stivers on Premier High Rise, by LEMAR Eileenmere Lad 549. 3, Abel Angus Farms, Williamsport, Ind., on AF Skywalker, by LEMAR Eileenmere Lad 549.

Class 9—calved 3-4-80 to 3-30-80 (3 shown): 1, Leo's Angus Ranch, Garden City, Mo., and Sydenstricker Angus Farms, Mexico, Mo., on R&J Colonel, by General JJ Patton. 2, Bradley & Steuland, Calamus, Iowa, and Limited Edition Associates on Limited Edition, by MSU Headliner. 3, Rally on Rally Minuteman 540 by Shoshone Titan FD60.



From left are American Angus Assn. Executive Vice President Dick Spader; Bill Hodge, West Point, Ga.; Jim Vance, Buckhead, Ga.; and Ed Oliver, West Point, Ga.



Guy Kynerd (left), Clayhill Angus, Meridian, Miss., and Dave McMahon, Belle Point Ranch, Lavaca, Ark.

Class 10—calved 1-13-80 to 2-7-80 (4 shown): 1, Michigan State, Blugrass Angus Farm, Danville, Ky., Wilbur Fruhling & Sons, Penfield, Ill., and Gene Triplett, Danville, Ky., on MSU Legacy, by Thomas Chaps. 2, South Fork and Breeders for Progress, on Progression, by Premier Progressor. 3, Summitcrest on High Power, by PS Power Play.

Class 11—calved 5-2-79 to 7-4-79 (4 shown): 1, E&W Cattle Co, Greentown, Ohio, and John & David Henderson, Carstairs, Alta., on E&W Altitude, by LEMAR Eileenmere Lad 549. 2, Way-View, Mike Colvin, West Salem, Ohio, and John Wise on 4 C Revolution 36 0139, by Byergos Black Revolution 36. 3, Accent on Esquire Northern Marshall 135, by Esquire Northern Marshall 90.

Class 12—calved 2-12-79 to 4-30-79 (4 shown): 1, Rally, Rosebank and Timber Valley on Rosebank Connection 69, by Bon View Connection. 2, Summitcrest and Briarwood Assoc. on Summitcrest Puritan, by Sayre Patriot. 3, Sunny Valley on SVF Diplomat, by Elweblo Dynamo.

Junior Calf Champion: Zeedyk and Lineback on Mr. Strikeback 81.

Reserve Junior Calf Champion: R&J on R&J Austin 13.

Senior Calf Champion: White and High Interest Breeders on Fleetwood High Interest.

Reserve Senior Calf Champion: Gunston-West on Gunston Tall Texan.

Intermediate Champion: Premier and Billman on Pine Drive Big Sky.

Reserve Intermediate Champion: Davis on Supreme Advancer.

Junior Champion: Sunny Valley and Power Pack Associates on SVF Power Pack.

Reserve Junior Champion: Michigan State, Blugrass, Fruhling & Sons and Triplett on MSU Legacy.

Senior Champion: Rally, Rosebank and Timber Valley on Rosebank Connection 69.



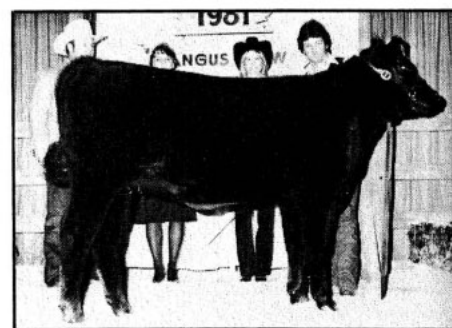
Manning the brush is Paul Stueland, Calamus, Iowa.



Reserve junior champion heifer Lady Diana of Fabius Creek, 2-17-80 daughter of Ken Caryl Mr. Angus 8017, was exhibited by Timber Valley Farms and UT Ranch.



Reserve intermediate champion heifer HA Miss Laura, 5-3-80 daughter of Sir Wms Elector, was exhibited by Laura Haas.



Reserve senior heifer calf champion Accent Miss Rosebud 60, 11-6-80 daughter of Sir Wms Warrant, was exhibited by Accent Angus Farm.



Reserve junior heifer calf champion Fleetwood Blackcap 5131, 3-15-81 daughter of Sir Wms Warrant, was exhibited by Richard White.

Mrs. Dick Spader (left) and Mrs. Charles Cannon. The power behind the throne?

North American



Pete Watts, Carthage, Tenn., recently purchased an interest in Fairfield Hi Guy.



Long-time cattleman Ed Fowler, Bedford, Ind., (left) and W.R. Shehan, owner of Clermont Farms, Versailles, Ky.

Reserve Senior Champion: Summitcrest and Briarwood on Summitcrest Puritan.

Grand Champion: Sunny Valley and Power Pack Associates on SVF Power Pack.

Reserve Grand Champion: Rally, Rosebank and Timber Valley on Rosebank Connection 69.

Get-of-Sire: Summitcrest, TC and Sunny Valley on PS Power Play.

Junior Get-of-Sire: Premier, Michigan State and White on Ken Caryl Mr. Angus 8017.

Best Six Head: R&J.

JUNIOR SHOW

Class 1—calved 1-6-81 to 5-10-81 (5 shown): 1, Todd Dawes on DD Miss Erica Supreme 131, by Superstud.

Class 2—calved 11-1-80 to 12-9-80 (5 shown): 1, Todd Dawes on DD Miss Karama 650, by Superstud.

Class 3—calved 9-1-80 to 10-7-80 (11 shown): 1, Todd Dawes on DD Lady Taurus 620, by Sir Williams Excursion.

Class 4—calved 7-2-80 to 8-14-80 (6 shown): 1, Jackie Ellis, Greentown, Ind., on E&W Enchantress J46, by LEMAR Eileenmere Lad 549.

Class 5—calved 5-2-80 to 6-6-80 (11 shown): 1, Laura Haas on HA Miss Laura, by Sir Wms Elector.

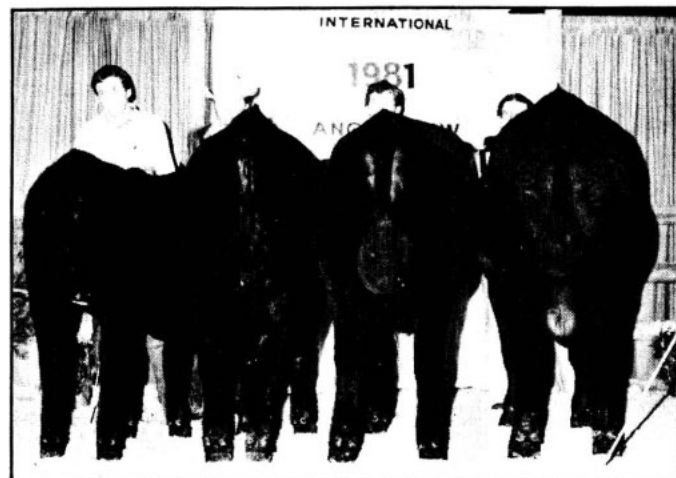
Class 6—calved 4-1-80 to 4-26-80 (15 shown): 1, Danny Knop on KAF Miss Wampum 0100 525, by Sir Wms Wampum.

Class 7—calved 3-2-80 to 3-29-80 (11 shown): 1, Dennis Knop, Ida Grove, Iowa, on KAF Miss Wampum 037 643, by Sir Wms Wampum.

Class 8—calved 1-8-80 to 2-1-80 (4 shown): 1, Cheryl Knop, Ida Grove, Iowa, on KAF Miss Wampum 015 810, by Sir Wms Wampum.

Grand Champion: Laura Haas on HA Miss Laura.
Reserve Grand Champion: Jackie Ellis on E&W Enchantress J46.

Pat Scheer (left), Gunston-West, Lampasas, Texas, and Ken Conway, R&J Ranch, Briggs, Texas, talk over things in the get-ready area prior to one of the bull classes.



Champion get-of sire went to progeny of PS Power Play owned by Summitcrest Farms, TC Ranch and Sunny Valley Farm.



Champion junior get-of-sire went to Ken Caryl Mr. Angus 8017 progeny shown by Premier Beef, Richard White and Michigan State University.



The 51 exhibitors who led in the 66 head for Sunday morning's junior show gave judge Dave Hawkins, Michigan State University, East Lansing, a strong set of cattle from which to choose. Todd Dawes, Urbana, Ind., won the first three classes and Knop cattle (shown by Danny, Dennis and Cheryl Knop, Ida Grove, Iowa) topped the last three. However, Hawkins went to Laura Haas's HA Miss Laura (left) for his grand champion, then selected E&W Enchantress J46 (right) shown by Jackie Ellis, Greentown, Ind., reserve. Laura, who is from LeRoy, Ill., showed this same heifer, a Sir Wms Elector daughter, to last summer's American Angus Breeders' Futurity reserve intermediate championship, a title she also was to win in the North American open show the day after this junior show.

Ringside spectators must have agreed with the judge's decision.



Ham James, Newton, Ill.

Bernie Scheer (left), Smithville, Mo., and Blair Surber, Hope-well Jct., N.Y.



Dean Pike offers some advice to Texas Angus Assn.'s Bill Hall (right).

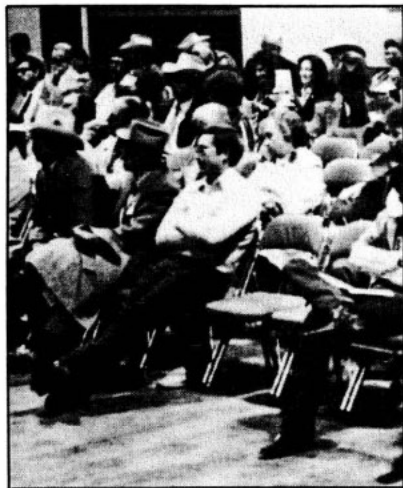


REG exhibited the best six head.

Association Annual Meeting



Questions and comments from the floor were what the open committee meeting was all about. Here Quentin Wright, Valrico, Fla., addresses the group.



In addition to delegates, more than 100 people sat in on the national meeting.

For the second year association members were invited to an open committee meeting held in conjunction with the annual meeting. This year's host was the Planning and Industry Committee whose members led discussions and answered questions on a wide range of topics from embryo transfers to a checkoff program for the purebred industry to restricting A.I. use of bulls until they have successfully completed a progeny test. Representing the association (in addition to Executive Vice President Dick Spader) were (from left) staff member John Crouch, Director Bob Neumeier, Committee Chairman Bill Bedingfield, Directors A.F. Flint, Bob Sitz and Joe Neely.



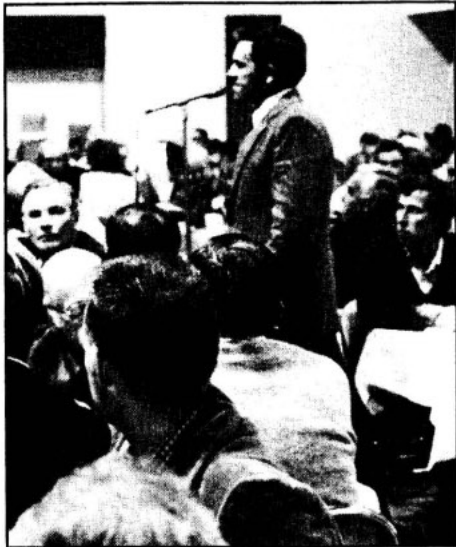
Newly elected officers Ray Adams (left) Tahoka, Texas, vice president; and President Charles Cannon (second from left) Flemingsburg, Ky., greet new members of the board of directors. They are (from left) Eddie Sydenstricker, Mexico, Mo.; Gary Dameron, Lexington, Ill.; and Harvey Lemmon, Woodbury, Ga. They join reelected board members Dr. Arthur Bartenslager, Churchville, Va., and Joe Reznicek, Valentine, Neb.

The Illinois delegation, like the other delegations present, had to decide on their choices for officers and board members.

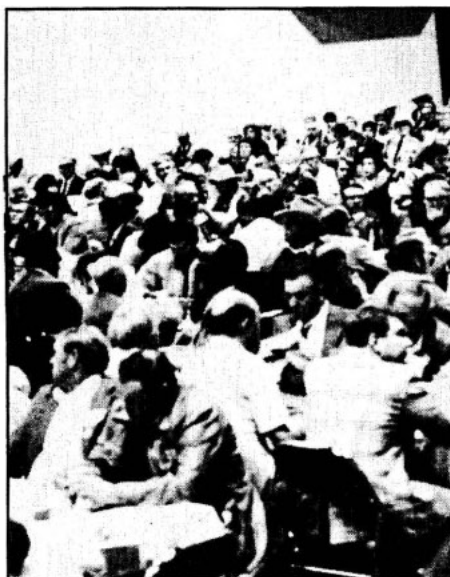


Retiring American Angus Assn. president Myron Woolever, Unionville, Mo., flanked by members of his board of directors, bids farewell to the membership.





Benny Holder, Gamaliel, Ky., nominates Charles Cannon, a fellow Kentucky Angus breeder, for the presidency of the American Angus Assn. Cannon, who started in the Angus business in 1952, co-owns Stone Gate Farms, Flemingsburg, with his father and brother. He and his wife Frances have three children, Clay, Joy and Chris.



The 280 delegates heard committee reports and nominating speeches and elected five board members, a president and a vice president during the Monday afternoon annual meeting.

1982 COMMITTEE MEMBERS AMERICAN ANGUS ASSN.

EXECUTIVE Ray Adams, *Chairman*
Robert Miller, Donald Greiman
William Conley, W.C. Bedingfield

**BREED
IMPROVEMENT** Henry Gardiner, *Chairman*
A.F. Flint, Robert Sitz
Dr. Arthur Bartenslager, Harvey Lemmon

ACTIVITIES Joseph Reznicek, *Chairman*
Donald Greiman, Eddie Sydenstricker
Robert Neumeyer, Gary Dameron

RULES Robert Miller, *Chairman*
Ray Adams, W.C. Bedingfield
Joe Neely, William Conley

**PUBLIC
RELATIONS** Dr. Arthur Bartenslager, *Chairman*
Robert Miller, Donald Greiman
Harvey Lemmon, Gary Dameron

FINANCE William Conley, *Chairman*
Joseph Reznicek, Henry Gardiner
Ray Adams, Joe Neely

**PLANNING &
INDUSTRY** W.C. Bedingfield, *Chairman*
A.F. Flint, Eddie Sydenstricker
Robert Sitz, Robert Neumeyer

OTHER ASSIGNMENTS

NCA BOARD Ray Adams

**CERTIFIED
ANGUS BEEF** Fred Johnson, *Chairman*
Edward Elliott, Donald Greiman
Henry Gardiner, Joseph Reznicek

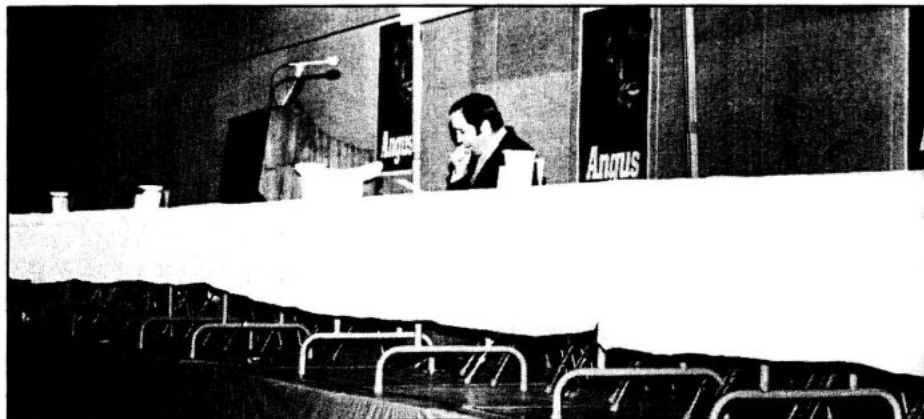
API BOARD Ray Adams, *Chairman*
Richard L. Spader, *President*
William Conley, Donald Greiman, Robert Miller
W.C. Bedingfield, Myron Woolever

1982 MEETINGS

**BOARD
MEETINGS** March 14-16, St. Joseph
June 13-15, St. Joseph
Oct. 19-21, St. Joseph
Nov. 14 and Nov. 16, Louisville

ANNUAL MEETING Nov. 15, Louisville

It really is lonely at the top.



American Angus Auxiliary



JoAnn Smith, Micanopy, Fla., who chairs the National Cattlemen's Assn. Beef Promotion and Consumer Relations Committee, was the auxiliary's luncheon guest speaker.



American Angus Auxiliary officers for the 1982 term are (from left) Bette Votaw, Wellfleet, Neb., third vice president; Patti Rae, Onondaga, Mich., president; Anne Palton Gorham, St. Louis, first vice president; June Hagenbuch, Lawrence, Kan., second vice president; and Nellie Meinders, New Sharon, Iowa, secretary-treasurer.

The few days spent at the North American each year are busy ones for members of the American Angus Auxiliary—they elect officers, select Miss American Angus for the coming year, host a luncheon that traditionally features a guest speaker and auction the back cover of their next yearbook.



One of American Angus Assn.'s President Charles Cannon's first official duties was the crowning of Miss American Angus, Diane Krause. Diane won't soon forget this North American—not only was she selected national Angus queen, but as a member of the Pennsylvania 4-H judging team taking part in the livestock exhibition's national competition, she placed eighth in reasons and ninth in beef.



Thanks to Leo's Angus Farm, Garden City, Mo., and owners Mr. & Mrs. Warren Ratty (shown here with auxiliary president Patti Rae, left) the auxiliary collected \$1,350 for the back cover of their 1982 yearbook.



And the new Miss American Angus is . . . Diane Krause, Slatington, Pa. She's shown here (second from right) with other contestants (All five are 1981 American Angus Auxiliary scholarship recipients.) From left are Barbara Baylor, Hanna City, Ill.; Jill Frisbee, Madison, Mo.; Mary Frances Hoskins, Liberty, Ky.; Diane Krause; and Amy Jo Rankin, Liberty, S.C.