



# Open Shows

## ► Open Angus shows featured this month

Alabama Nat'l Fair  
Arkansas State Fair  
Eastern Nat'l  
Grand Nat'l, Cow Palace  
Keystone Int'l Livestock Expo  
Mississippi Angus Ass'n Preview  
Northern Int'l Livestock Expo  
South Carolina State Fair  
State Fair of Texas  
Tennessee State Fair

### ▣ Eastern Nat'l Livestock Show, Timonium, Md.

Judge: Dave Johnston, Dothan, Ala. • Sept. 21



► Grand champion bull, **BF Trucker 380**, by Bipperts Farms, Alden, N.Y. He's a Sept. 2000 son of Krueger's Backstretch 1104.



► Grand champion female, **Triple C Sasha Girl**, by Chelsea Wieben, Leesburg, Va. She's an April 2000 daughter of Northern Improvement 4480 GF.



► Grand champion cow-calf pair, **Hill Crest Edy 447**, by Courtenay Rucker, Delaplane, Va. She's a May 1997 daughter of GDAR Rito 5130. Her calf is a March 2001 son of Hill Crest Dateline 5192-885.



► Reserve grand champion bull, **Mystic Hill Millennium III**, by Mystic Hill Farm, Culpeper, Va. He's a Jan. 2001 son of WRA Yogi F3.

► Reserve grand champion female, **Champion Hill Peg 2131**, by Will Iager, Fulton, Md. She's a July 2000 daughter of Leachman Saugahatchee 3000C.



► Reserve grand champion cow-calf pair, **Burberry's Blackcap 739**, by Cortney Hill-Dukehart, Sykesville, Md. She's an April 1997 daughter of Burberry's Right Smart 405. Her calf is a March 2001 daughter of Famous 7001.



### ▣ South Carolina State Fair Angus Show, Columbia

Judge: Chan Phillips, Maysville, Ky. • Oct. 12



► Grand champion bull, **WHF Blockbuster 2000**, by Louis Inzeo, Pamplin, Va. He's a Jan. 2000 son of Ankonian Elixir 100.



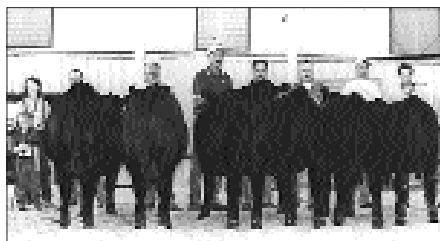
► Grand champion female, **Canoe Creek Miss K Pride**, by Lauren Moss, Harrodsburg, Ky. She's a May 2000 daughter of Krugerrand of Donamere 490.



► Reserve grand champion bull, **CRR Tee Box 076**, by C Rock R Farm, Cherryville, N.C. He's a Jan. 2000 son of VDAR Lucy's Boy.



► Reserve grand champion female, **Cedar Creek Blackcap 2101**, by Scott Bourne, Donalds; and G. Van Frye, Clemmons, N.C. She's a Jan. 2001 daughter of Leachman Explorer.



► **Cedar Creek Farm**, Donalds, exhibited the winning breeder's best six head.

### ▣ Tennessee State Fair

Angus exhibitors led 50 entries at the Tennessee State Fair Angus Show, Sept. 9, in Nashville, Tenn. Jim Ward, Palmyra, Wis., evaluated the 41 females and nine bulls.

Champion Hill Tecumseh 2382 claimed grand champion bull. Magic Meadow Farm, Franklin, Tenn.; and Champion Hill, Bidwell, Ohio, own the May 2000 son of Champion Hill Tecumseh.

Maple Valley Ranch, Cumberland Furnace, Tenn., showed the reserve grand champion bull, Maple Valley Saugahatchee 99. He's a January 1999 son of Leachman Saugahatchee 3000C.

Robbie Smith, Lebanon, Tenn., led the grand champion female, Champion Hill Georgina 1949, a March 2000 daughter of Whitestone Widespread MB.

DPF Saugahatchee Lady D408 captured reserve grand champion female honors. Robbie Smith, Lebanon, Tenn., owns the September 2000 daughter of Leachman Saugahatchee 3000C.

## OPEN SHOWS

CONTINUED FROM PAGE 177

### State Fair of Texas Angus Show, Dallas

Judge: Wes Hudson, Harrison, Ark. • Oct. 6



► Grand champion bull, **DAJS Prophet K05**, by Doug Satree Angus, Montague. He's a March 2000 son of Leachman Saugahatchee 3000C.



► Grand champion female, **DAJS Lauren K024**, by Katy Satree, Montague. She's a Sept. 2000 daughter of Leachman Saugahatchee 3000C.



► Reserve grand champion bull, **SAR Daniel 901**, by Sandhill Angus Ranch, Holly, Colo.; and Bar N L Livestock, Douglas, Wyo. He's a Jan. 1999 son of TC Stockman 365.



► Reserve grand champion female, **G Bar H Enchantress K287**, by Doug Satree Angus, Montague. She's a March 2000 daughter of KMA Versatile 4127.

### Alabama Nat'l Fair Angus Show, Montgomery

Judge: Andrew Matheny, Mays Lick, Ky. • Oct. 13



► Grand champion bull, **APS Tough Time**, by Anne Patton Schubert, Taylorsville, Ky. He's a June 2000 son of Leachman Right Time.



► Grand champion female, **BK Carroline**, by Lance Smith, Cullman. She's a Feb. 2000 daughter of BK Mighty Man.



► Reserve grand champion bull, **MM Bando 5175 105**, by Mike McCravy, Bowdon, Ga. He's a Feb. 2001 son of SAF 598 Bando 5175.



► Reserve grand champion female, **MM Heather 101**, by Adrian Wiggins, Waco, Ga. She's a Sept. 2000 daughter of Leachman Saugahatchee 3000C.

## OPEN SHOWS

### Keystone Int'l Livestock Exposition, Harrisburg, Pa.

Judge: Calvin Drake, Manhattan, Kan. • Oct. 5



► Grand champion bull, **BF Trucker 380**, by Bipperts Farms, Alden, N.Y. He's a Sept. 2000 son of Krueger's Backstretch 1104.



► Grand champion female, **Dalton's Queen L 0217**, by Weaverland Valley Farms, New Holland, Pa. She's a Sept. 2000 daughter of PAPA Universe 515.



► Grand champion cow-calf pair, **Keifer's Camilla**, by JH Keifer Farm, Bangor, Pa. She's a May 1999 daughter of Bishard's Traveler 7492. Her calf is an April 2001 son of Millcreek Diversity.



► Reserve grand champion bull, **LVA Ace 365 005**, by Kurt Long, Airville, Pa. He's a May 2000 son of TC Stockman 365.

► Reserve grand champion female, **Golden Rule Ginger 062**, by Carl Detwiler, Roaring Spring, Pa. She's a March 2000 daughter of Leachman Saugahatchee 3000C.



► **Weaverland Valley Farms**, New Holland, Pa., exhibited the winning breeder's six head.



### Northern Int'l Livestock Exposition Roll of Victory (ROV) Angus Show, Billings, Mont.

Judge: Greg McCurry, Sedgwick, Kan. • Oct. 19



► Grand champion bull, **TJ Amigo V615**, by TJ Cattle Co., Columbus, Mont., and Suburban Home Farm, Spencer, Ind. He's a Feb. 1999 son of TC Stockman 365.



► Grand champion female, **BC Pierre's Dr. Blkbd Girl 017**, by Kyle Conley, Clarksdale, Mo. She's a Jan. 2000 daughter of OCC Doctor 940D.



► Reserve grand champion bull, **WC Northern Edge 0C04**, by Willy Couch, Yukon, Okla.; Lafin Ranch, Olsburg, Kan.; and Hamilton Farms, Cochrane, Alberta, Canada. He's a Jan. 2000 son of Northern Improvement 4480 GF.



► Reserve grand champion female, **BT Pride 90K**, by Zane Barragree, Absarokee, Mont. She's a Jan. 2000 daughter of Da-Es-Ro Twister 0627.

### Grand Nat'l Angus Show, Cow Palace, San Francisco, Calif.

Judge: Bill McLean, Coulee City, Wash. • Nov. 2



► Grand champion bull, **KC Mountain Thunder**, by KC Angus, La Pine, Ore. He's a March 2000 son of OGL Battle Cry 427 128.



► Grand champion female, **MMO Allie 005**, by Megan Owings, Powell Butte, Ore. She's a March 2000 daughter of Sun Money Market 4E.



► Reserve grand champion bull, **HAVE Precision H301**, by HAVE Angus, Wilton, Calif. He's a March 2001 son of Twin Valley Precision E161.



► Reserve grand champion female, **Green's Leslie 0044**, by Ryan Burnthorne, Merced, Calif. She's an April 2000 daughter of WK Gunsmoke.

CONTINUED ON PAGE 180

## OPEN SHOWS

CONTINUED FROM PAGE 179

### Mississippi Angus Ass'n Preview Show, Jackson Judge: Johnny Smith, Lineville, Ala. • Oct. 7

► Grand champion bull, **Grandview Womack 4100 2319**, by Jon Whitlock, Iuka. He's an Oct. 1999 son of LF New Trend 4100.



► Grand champion female, **Grandview Womack Maid 1410**, by Priscilla Giachelli, Blue Springs. She's an Oct. 2000 daughter of Leachman Saugahatchee 3000C.



► Reserve grand champion bull, **Grandview Womack 3000C 1980**, by Trey Gunn, Tiplersville. He's a Nov. 2000 son of Leachman Saugahatchee 3000C.



► Reserve grand champion female, **GJF Karama Saugahatchee 2012**, by Justin Denson, Tishomingo. She's a March 2000 daughter of Leachman Saugahatchee 3000C.



CONTINUED ON PAGE 182

## OPEN SHOWS

CONTINUED FROM PAGE 181

### Arkansas State Fair Angus Show, Little Rock Judge: Tom Biglieni, Republic, Mo. • Oct. 15

► Grand champion bull, **SVF Durango 561**, by Forgey 09 Ranch, Douglas, Wyo.; and Sunny Valley Farm LLC, Yorkville, Ill. He's a Feb. 1999 son of SVF GDAR 216 LTD.



► Grand champion female, **SFI Jestress K199**, by Smith Flooring Inc., Mountain View, Mo. She's an Oct. 2000 daughter of GDAR SVF Traveler 228D.





---

► Reserve grand champion bull, **KW Bartime**, by Matthew Boecker, Bentonville. He's a Nov. 2000 son of Leachman Right Time.



► Reserve grand champion female, **Schafer's Black Sarah Rose**, by Larry Schafer, Salem, Mo. She's an Oct. 2000 daughter of Rito 9FB3 of 5H11 Fullback.

