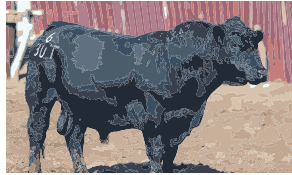


PERFORMANCE REPORT



Compiled by Linda Evans, assistant editor

This column features the performance leaders in central bull tests hosted across the country. To access a state-by-state listing of central bull tests, visit our Virtual Library online at www.api-virtuallibrary.com/CentralBullTests.htm.

The listing includes contact information, links to test websites, current test schedules and dates of upcoming tests.

Calhoun Bull Evaluation

112-day final report (Nov. 7, 2017)

The 48th Calhoun Bull Evaluation Program began June 26-27 with the delivery of 151 bulls representing five breeds to the Northwest Georgia Research and Education Center at Calhoun, Ga. The average on-test weight for the 103 Angus bulls was 873 lb., with overall on-test weights averaging 873 lb. Eligible bulls were born Sept. 1-Nov. 30, 2016.

HIGH-ADG ANGUS Lot 103; owner: Bridges Angus Farm, Phillip and Alan Bridges, Lexington, Ga.; sire: Plattermere Weigh Up K360; ADG: 4.98 lb.; ADG ratio: 133; WDA: 3.75 lb.; WDA ratio: 113; wt.: 1,618 lb.; SC: 37.5 cm

HIGH-WDA ANGUS Lot 53; owner: Taylor Angus, Danny Taylor, Adairsville, Ga.; sire: Quaker Hill Rampage 0A36; ADG: 4.09 lb.; ADG ratio: 109; WDA: 3.86 lb.; WDA ratio: 117; wt.: 1,345 lb.; SC: 40.5 cm

ANGUS AVERAGES (102 head) ADG: 3.74 lb.; WDA: 3.31 lb.; wt.: 1,294 lb.

OVERALL AVERAGES (149 head) ADG: 3.75 lb.; WDA: 3.29 lb.; wt.: 1,294 lb.

The sale was scheduled for Dec. 1.

For more information contact Jason Duggin, Extension beef animal scientist, phone: 706-624-1403; cell:

706-728-4354; jduggin@uga.edu; or visit the website at www.ugabeef.com/programs.

Green Springs Spring Bull Test

112-day final report (Oct. 11, 2017)

The Green Springs Spring Bull Test at Nevada, Mo., weighed bulls off test Oct. 11, 2017. The test was a 112-day performance test with bulls grouped by breed and size as much as possible, offering an optimum growth environment. Bulls must be weaned and vaccinated. The spring test is for bulls born Aug. 1-Oct. 31, 2016.

Bulls were fed for a 14-day warm-up period before the official test began. Bulls were fed a high-quality ration formulated by a qualified nutritionist and adequate for a targeted average daily gain (ADG) of 3.5 lb.

HIGH-ADG ANGUS Lot 17099; owner: 4N, Roger Nelson, Mountain Grove, Mo.; ADG: 4.96 lb.; ADG ratio: 108; WDA: 2.86 lb.; WDA ratio: 105; RFI: -2.4 lb.; wt.: 1,423 lb.; test index: 104; SC: 39 cm

HIGH-WDA ANGUS Lot 17136; owner: Dr. & Mrs. Norman Garton, Nevada, Mo.; ADG: 4.17 lb.; ADG ratio: 115; WDA: 4.02 lb.; WDA ratio: 147; RFI: 1.83 lb.; RFI ratio: 95; wt.: 1,570 lb.; test index: 116; SC: 40 cm

BEST RFI ANGUS Lot 17078; owner: H. Tabor, Osceola, Mo.; ADG: 3.79 lb.; ADG ratio: 105; WDA: 3.08 lb.; WDA ratio: 112; RFI: -5.1; wt.: 1,225 lb.; test index: 111; SC: 39 cm

HIGH-INDEXING ANGUS Lot 17137; owner: George Garton, Nevada, Mo.; ADG: 3.88 lb.; ADG ratio: 107; WDA: 3.58 lb.; WDA ratio: 131; RFI: -2.00 lb.; wt.: 1,465 lb.; test index: 120; SC: 38 cm

The test sale took place Nov. 19.

For more information contact Kent Abele, owner, at 417-448-7416 or 417-448-7416; email him at gsbulltest@gmail.com, or visit the test website at www.greenspringsbulltest.com.

Virginia BCIA Culpeper Sr. Bull Test

112-day final report (Oct. 31, 2017)

The Culpeper Sr. Bull Test put on by the Virginia Beef Cattle Improvement Association (BCIA) at Blacksburg, Va., began July 11 with starting weights taken on 111 bulls. There were 108 Angus bulls on test. The test is a 112-day test for bulls born Aug. 15-Nov. 30, 2016.

HIGH-ADG ANGUS Lot 66; owner: Spring Hill Farm, Greg and Becky Moore, Bridgeport, W.Va.; sire: VAR Discovery 2240; ADG: 5.04 lb.; ADG

ratio: 124; wt.: 1,280 lb.; station index: 107; sale index: 94; SC: 38 cm; frame: 6.1

HIGH-TEST-INDEX ANGUS Lot 77; owner: Silver Creek Angus, John Prekker, Danville; sire: RB Tour of Duty 177; ADG: 4.87 lb.; ADG ratio: 120; wt.: 1,555 lb.; station index: 115; sale index: 99; SC: 41.5 cm; frame: 6.8

HIGH-SALE-INDEX ANGUS Lot 6; owner: Echo Ridge Farm, C.W. and Shirley Pratt, Atkins, Va.; sire: GAR Sure Fire 6524; ADG: 4.29 lb.; ADG ratio: 105; wt.: 1,465 lb.; station index: 112; sale index: 101; SC: 35 cm; frame: 6.2

ANGUS AVERAGES (106 head) ADG: 4.07 lb.; wt.: 1,329 lb.

OVERALL AVERAGES (109 head) ADG: 4.06 lb.; wt.: 1,326 lb.

The test sale was scheduled for Dec. 9, 2017, at Glenmary Farm, Rapidan, Va.

For more information contact Scott Greiner, extension beef specialist, at

540-231-9159; fax: 540-231-3713 or sgreiner@vt.edu; or Tom & Kim Nixon, owner/manager, Glenmary Farm, at 540-672-7396; fax: 540-672-3579 or glenmaryfarm@vabb.com. Information is also available on the test website, <http://bcia.apsc.vt.edu>.

2018 Clemson Bull Test

84-day report (Nov. 14, 2017)

Fifty-nine bulls were delivered to the 2018 Clemson Bull Test at the Clemson Beef Cattle Farm near Pendleton, S.C., Aug. 9. There are 19 senior Angus bulls and 13 junior Angus bulls on test. The bulls were weighed on test Aug. 24 following a 14-day warm-up period.

HIGH-ADG SENIOR ANGUS Lot 42; owner: Leonard Fussell, Millers Creek, N.C.; sire: SAV Plattemere Weigh Up K360; ADG: 5.42 lb.; ADG ratio: 129; WDA: 3.49 lb.; WDA ratio: 107; wt.: 1,530 lb.; SC: 35 cm

HIGH-WDA SENIOR ANGUS Lot 53; owner: Oak Hill Farm, Six Mile, S.C.; sire: RB Tour of Duty 177; ADG: 4.26 lb.; ADG ratio: 101; WDA: 3.73 lb.; WDA ratio: 115; wt.: 1,520 lb.; SC: 30.5 cm

HIGH-ADG JUNIOR ANGUS Lot 76; owner: Currahee Cattle Co., Ken Whitfield, Toccoa, Ga.; sire: GAR Relevance; ADG: 4.51 lb.; ADG ratio: 119; WDA: 3.48 lb.; WDA ratio: 106; wt.: 1,175 lb.

HIGH-WDA JUNIOR ANGUS Lot 66; owner: Broadway Cattle Farm, Monroe N.C.; sire: Connealy IF 4925 9933; ADG: 3.96 lb.; ADG ratio: 104; WDA: 3.55 lb.; WDA ratio: 109; wt.: 1,320 lb.

SENIOR ANGUS AVERAGES (19 head) ADG: 4.21 lb.; WDA: 3.26 lb.; wt.: 1,335 lb.

JUNIOR ANGUS AVERAGES (13 head) ADG: 3.80 lb.; WDA: 3.27 lb.; wt.: 1,156 lb.

Off-test weights were to be taken Dec. 12. The sale is scheduled for Feb. 3, 2018.

For additional information contact

Continued on page 72

PRETTY
in **PINK**

THE WORLD'S GREATEST CATTLE TAGS NOW COME IN PINK!

Ritchey EST. 1964
Livestock ID

When engraved, the core color is revealed, creating 100% FADE-PROOF information!

Call to order, or learn more:
1-800-EAR-TAGS

MADE IN USA

Follow Us on Facebook

www.ritcheytags.com

Performance Report *continued from page 71*

Steven Meadows, bull test program director, at smdws@clemson.edu or at 864-633-9970 (cell) or Gary Burns, Clemson Bull Test manager at gurns@clemson.edu or at 864-617-3402 (cell). Information is also available on the test website at www.clemson.edu/extension/livestock/beef/bulltests-cubt/.

Tifton Bull Evaluation Program

28-day report (Nov. 7)

The 60th Tifton Bull Evaluation Program at Tifton, Ga., began Oct. 9-10 with the delivery of 146 bulls representing eight breeds and averaging 843 lb. The 112-day test features bulls born Dec. 1, 2016-Feb. 28, 2017. All bulls tested negative for persistent infection with bovine viral diarrhea (PI-BVD).

Going on test Oct. 10, the 76 Angus bulls averaged 855 lb. for a WDA of 3.14 lb., while all 146 bulls averaged 843 lb. with a WDA of 3.06 lb. At the 28-day mark, performance leaders included:

HIGH-ADG ANGUS Lot 85; owner: Rocking W Angus, Robin Wilson, Jefferson, Ga.; sire: Baldridge Jennings Z064; ADG: 5.96 lb.; ADG ratio: 151; WDA: 3.24 lb.; WDA ratio: 101; wt.: 1,100 lb.

HIGH-WDA ANGUS Lot 99; owner: Oakdale Farms, Bill and Judy Waters, Rome, Ga.; sire: Deer Valley Confidence 3635; ADG: 4.07 lb.; ADG ratio: 103; WDA: 3.66 lb.; WDA ratio: 114 wt.: 978 lb.

Interim weights were to be collected Dec. 5, 2017, and Jan. 2, 2018, with final weights scheduled for collection Jan. 29-30, 2018.

Qualifying bulls will sell in the test sale March 7, 2018.

ANGUS AVERAGES (74 head) ADG: 3.95 lb.; WDA: 3.21 lb.; wt.: 966 lb.

OVERALL AVERAGES (143 head) ADG: 3.98 lb.; WDA: 3.14 lb.; wt.: 954 lb.

Visitors are welcome at the station 8 a.m. to 5 p.m., Monday through Friday. Contact Jacob Segers for more information at 2360 Rainwater Rd., Tifton, GA 31793; phone: 229-386-3683 or at jacobs@uga.edu. If weekend visits are desired, please call Mike Keeler at 229-831-5416. Bull and heifer reports can be accessed through the test website at www.ugabeef.com/programs.

OPSU Beef Bull Performance Test

28-day report (Nov. 4, 2017)

The 85 beef bulls consigned to the 66th annual Oklahoma Panhandle State University (OPSU) Beef Bull Performance Test were weighed on test Oct. 7 at the station near Goodwell, Okla. Consigned by 17 breeders, breeds represented were Angus, Hereford, Maine-Anjou and Red Angus. The 112-day test ends Jan. 27, 2018.

HIGH-ADG SENIOR ANGUS owner: Al Rutledge, Stillwater, Okla.; sire: GAR Anticipation; ADG: 8.39 lb.

HIGH-ADG JUNIOR ANGUS owner: Bill Gilmore, Canyon, Texas; sire: PVF Insight 0129; ADG: 7.61 lb.; WDA: 4.23 lb.

ANGUS SENIOR PEN owner: Al Rutledge; ADG: 6.76 lb.

ANGUS JUNIOR PEN owner: Bill Gilmore; ADG: 5.54 lb.; WDA: 3.78 lb.

OVERALL AVERAGES (83 head) ADG: 4.48 lb.; WDA: 2.86 lb.

The next interim weight was scheduled for Dec. 2, 2017. The test will conclude Jan. 27, 2018, and the top 70 bulls will sell in the 66th Annual OPSU Bull Test Sale scheduled for Feb. 19. Those interested in following the performance of the bulls during the test can contact Gwen Martin at 580-349-1500 or gwen@opsu.edu.

Hinds Community College Bull Test

On-test report (Oct. 17)

Hinds Community College (HCC) in Raymond, Miss., has reported the beginning of the 2017-2018 HCC Bull Test. Bulls were received at the test station Oct. 3, 2017, for a start date of Oct. 17. Interim weigh dates were scheduled for Nov. 14, Dec. 12, and Jan. 9, 2018. Off-test weights are to be taken Feb. 6. The sale is scheduled for March 1.

For more information contact Kenneth Banes, farm manager, at 601-260-7850 (cell); or Lisa Whatley, office manager, at 601-857-3351 or email her at lwhatley@hindsc.edu.

University of Tennessee Senior Bull Test

84-day final report (Nov. 28, 2017)

The University of Tennessee Bull Testing Program located at the Middle Tennessee Research and Education Center in Spring Hill accepted delivery of bulls for the senior bull test Aug. 22 and weighed a total of 90 bulls on test Sept. 4. Senior bulls must have been born Sept. 1-Dec. 20, 2016. There were 73 Angus bulls on test.

HIGH-ADG ANGUS Lot 58; owner: Mills Angus Farms, Cookeville; sire: Quaker Hill Rampage 0A36; ADG: 6.73 lb.; ADG ratio: 137; WDA: 4.05 lb.; WDA ratio: 120; wt.: 1,802 lb.

HIGH-WDA ANGUS Lot 60; owner: Mills Angus Farms; sire: Quaker Hill Rampage 0A36; ADG: 6.07 lb.; ADG ratio: 124; WDA: 4.09 lb.; WDA ratio: 122; wt.: 1,720 lb.

ANGUS AVERAGES (71 head) ADG: 5.00 lb.; WDA: 3.36 lb.; wt.: 1,260 lb.

OVERALL AVERAGES (88 head) ADG: 4.94 lb.; WDA: 3.35 lb.; wt.: 1,251 lb.

The sale is scheduled for Jan. 18, 2018.

Continued on page 74

Performance Report *continued from page 72*

For more information contact David Kirkpatrick, professor of animal science, University of Tennessee, at 865-974-7294; fax: 865-974-0429 or fkirkpat@utk.edu; or Kevin Thompson, station manager, at 931-486-2129; fax: 931-486-0142. Test information is also available at <https://ag.tennessee.edu/AnimalScience/Pages/BullTestProgram.aspx>.

2018 Clemson Bull Test

84-day report (Nov. 14, 2017)

Fifty-nine bulls were delivered to the 2018 Clemson Bull Test at the Clemson Beef Cattle Farm near Pendleton, S.C., Aug. 9. There are 19 senior Angus bulls and 13 junior Angus bulls on test. The bulls were weighed on test Aug. 24 following a 14-day warm-up period.

HIGH-ADG SENIOR ANGUS Lot 42; owner: Primus Genetics, Millers Creek,

N.C.; sire: SAV Plattermere Weigh Up; ADG: 5.42 lb.; ADG ratio: 129; WDA: 3.49 lb.; WDA ratio: 107; wt.: 1,530 lb.; SC: 35.0 cm

HIGH-WDA SENIOR ANGUS Lot 53; owner: Oak Hill Farm, Six Mile, S.C.; sire: RB Tour of Duty 177; ADG: 4.26 lb.; ADG ratio: 101; WDA: 3.73 lb.; WDA ratio: 115; wt.: 1,520 lb.; SC: 30.5 cm

HIGH-ADG JUNIOR ANGUS Lot 76; owner: Currahee Cattle Co., Ken Whitfield, Toccoa, Ga.; sire: GAR Relevance; ADG: 4.51 lb.; ADG ratio: 119; WDA: 3.48 lb.; WDA ratio: 106; wt.: 1,175 lb.

HIGH-WDA JUNIOR ANGUS Lot 66; owner: Broadway Cattle Farm, Monroe, N.C.; sire: Connealy IF 4925 9933; ADG: 3.96 lb.; ADG ratio: 104; WDA: 3.55 lb.; WDA ratio: 109; wt.: 1,320 lb.

SENIOR ANGUS AVERAGES (19 head) ADG: 4.21 lb.; WDA: 3.26 lb.; wt.: 1,335 lb.

JUNIOR ANGUS AVERAGES (13 head) ADG:

3.80 lb.; WDA: 3.27 lb.; wt.: 1,156 lb.

Off-test weights were to be taken Dec. 12. The sale is scheduled for Feb. 3, 2018.

For additional information contact Steven Meadows, bull test program director, at smdws@clermson.edu or at 864-633-9970 (cell) or Gary Burns, Clemson Bull Test manager at gburns@clermson.edu or at 864-617-3402 (cell). Information is also available on the test website at www.clemson.edu/extension/livestock/beef/bulltests-cubt/.

SIU Bull Test

28-day report (Nov. 28, 2017)

Southern Illinois University (SIU) in Carbondale accepted 57 bulls for testing Oct. 12-13, 2017. There are 37 junior bulls and 20 senior bulls on test. Applications were due Sept. 8, with bulls tested in junior and

Continued on page 78



McConnell Altitude 3114

GENEX
PAP 38 @ 7500'

His Sons & Daughters Sell!

ANGUS
Bull & Female Sale
February 2, 2018
At the Ranch
270 Angus Sell



MA Blackcap 670M

Daughter of McConnell Altitude 3114
By sires SAV Regard 4863 & SAV Ten Speed 3127

McConnell Altitude 6228



PAP 37
Son of McConnell Altitude 3114

McConnell Angus
Dir. McConaha

Proven AI Sires:
SAV Husman 1441
SAV Regard 4863
SAV Ten Speed 3127
Havin Payweight 1882
McConnell Altitude 3114
VAR Discovery

200+ Calving Ease & Power Bulls!

Contacts:
Byron: 308.230.4407
Royce: 308.230.0430
Roger: 970.215.3214
Email: info@mcconnellangus.com
Web: www.mcconnellangus.com

Performance Report *continued from page 74*

senior divisions for 84 days this year. The test began Oct. 30-31, 2017, with the next interim weight scheduled for Dec. 26, 2017. Final weights will be taken Jan. 22-23, 2018.

The bull test station team is student-run, with Rebecca Atkinson, associate professor of animal science, food and nutrition for beef cattle providing advisory oversight and hands-on training. The objective is to test the bulls' potential for producing superior calves that will grow fast and efficiently. To be eligible for the program, bulls must be registered with a recognized national breed association, come to the facility in good health and meet other criteria set by Atkinson and the station advisory board.

The student team will have the opportunity to learn to handle large livestock and assess animal health. Each bull is fitted with a magnetic collar that, when in close proximity to its assigned feed stall, unlocks the door. This helps the team ensure that each bull receives only its measured portion of grain. In addition, the student team will learn to conduct the ultrasonic tests and to conduct the scheduled weigh-ins.

HIGH-ADG JUNIOR ANGUS Lot 42; owner: Keith Kramer, Farina, Ill.; sire: TC Total 410; ADG: 6.96 lb.; ADG ratio: 127; F/G: 3.46 lb.; F/G ratio: 125; wt.: 1,000 lb.

BEST F/G JUNIOR ANGUS Lot 32; owner: Eagle River Angus, Princeville, Ill.; sire: AAR Ten X 7008 SA; ADG: 6.86 lb.; ADG ratio: 125; F/G: 3.44 lb.; F/G ratio: 126; wt.: 1,040 lb.

HIGH-ADG AND BEST F/G (TIE) SENIOR ANGUS Lot 45; owner: Sledd Creek Farm, Gilbertsville, Ky.; sire: SCF All Around 63Z; ADG: 8.11 lb.; ADG ratio: 129; F/G: 3.98 lb.; F/G ratio: 122; wt.: 1,080 lb.

BEST F/G (TIE) SENIOR ANGUS Lot 54; owner: Gajewski Farms, Ashley, Ill.; sire: AAR Ten X 7008 SA; ADG: 7.68 lb.; ADG ratio: 122; F/G: 3.97 lb.; F/G ratio: 122; wt.: 1,045 lb.

The sale is set for March 2, 2018, and will include an online video option. For more information contact Atkinson at SIU—Carbondale, Department of Animal Science, Food & Nutrition, Mail Code 4417, 1205 Lincoln Dr., Carbondale, IL 62901; phone: 618-453-5000; fax: 618-453-5231; or ratkinsn@siu.edu. Information is also available on the test website at <http://bulltest.siu.edu/>.

MCA/MSU Bull Evaluation Program

26-day report (Nov. 22, 2017)

The Michigan Cattlemen's Association (MCA) and Michigan State University (MSU) have announced the beginning of the MCA/MSU Bull Evaluation Program, with 79 bulls weighing an average of 821 lb. Consignors must be paid members of the MCA and have their 2017 dues paid in advance. To be eligible for the test, bulls must have been born Sept. 1, 2016-March 31, 2017. There are 35 junior Angus bulls and 14 senior Angus bulls on test.

All bulls will be evaluated at the MCA/MSU Bull Evaluation Program Station located at Plank Farm, Crystal, Mich. The deadline for entries for the 112-day test was Sept. 1, with a delivery date of Oct. 13-14. Interim reports were scheduled for Dec. 22, 2017, and Jan. 19, 2018. Final weights will be taken Feb. 15-16.

HIGH-ADG SENIOR ANGUS Lot 17; owner: Voogt Farms, Marne, Mich.; sire: KCF Bennett Fortress; ADG: 6.44 lb.; ADG ratio: 123; WDA: 3.60 lb.; WDA ratio: 118; wt.: 1,185 lb.

HIGH-WDA SENIOR ANGUS Lot 1; owner: Grand River Angus Farm, Grand Rapids, Mich.; sire: Baldrige Download Z013; ADG: 5.38 lb.; ADG ratio: 103; WDA: 3.81 lb.; WDA ratio: 125; wt.: 1,295 lb.

HIGH-ADG JUNIOR ANGUS Lot 13; owner: Michigan State University, East Lansing, Mich.; sire: PA Fortitude 2500; ADG: 6.73 lb.; ADG ratio: 189; WDA: 3.00 lb.; WDA ratio: 98; wt.: 910 lb.

HIGH-WDA JUNIOR ANGUS Lot 30; owner: Dawson Farms, Concord, Mich.; sire: SAV Pedigree 4384; ADG: 4.42 lb.; ADG ratio: 124; WDA: 3.80 lb.; WDA ratio: 124; wt.: 1,135 lb.

OVERALL AVERAGES (79 HEAD) ADG: 3.90 lb.; WDA: 3.07 lb.; wt.: 920 lb.

The sale is scheduled for March 18.

For more information contact Dan Buskirk (buskirk@msu.edu) extension beef specialist; 2265 Anthony Hall, Michigan State University, East Lansing, MI 48824; 517-432-0400; Brian Plank, (brianplank@rocketmail.com) manager, 325 Mount Hope Rd., Crystal, MI 48818; phone: 989-235-6253 (office) or 989-506-2061 (cell); Michigan Cattlemen's Association (miccattlemen@aol.com), 2145 University Park Dr., Ste. 300, Okemos, MI 48864; phone: 517-347-8117. Additional information can be found on the test website at <http://beef.msu.edu/bulleval>. 